

E Cadherin Rabbit mAb

Catalog No: #58512

Package Size: #58512-1 50ul #58512-2 100ul

Orders: order@signalwayantibody.com

Support: tech@signalwayantibody.com

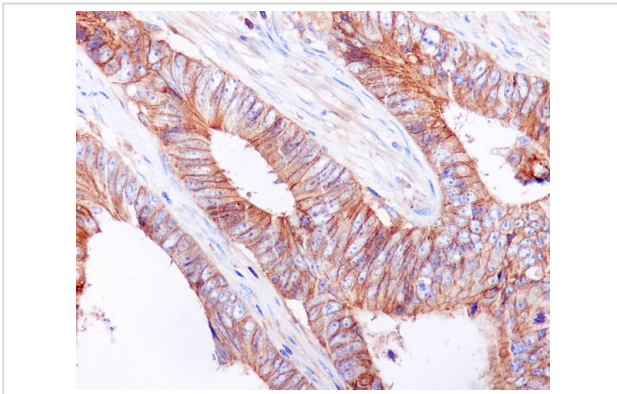
Description

Product Name	E Cadherin Rabbit mAb
Host Species	Rabbit
Clonality	Monoclonal
Isotype	Rabbit IgG
Purification	Affinity-chromatography
Applications	WB IHC ICC/IF FC
Species Reactivity	Human
Specificity	E Cadherin Antibody detects endogenous levels of total E Cadherin
Immunogen Description	A synthesized peptide derived from human E Cadherin
Other Names	Arc1; Cadherin 1; CAM 120/80; CD324; CDHE; E-Cad/CTF3; ECAD; Epithelial cadherin ;LCAM; Uvomorulin; CDH1;
Accession No.	Uniprot:P12830
Uniprot	P12830
Formulation	Rabbit IgG in phosphate buffered saline , pH 7.4, 150mM NaCl, 0.02% sodium azide and 50% glycerol.
Storage	Store at +4°C short term. Store at -20°C long term. Avoid freeze / thaw cycle.

Application Details

WB 1:5000~1:10000 IHC 1:100~1:500 ICC/IF 1:100~1:500 FC 1:500

Images



Immunohistochemical analysis of paraffin-embedded human colon cancer, using E Cadherin Antibody.

Product Description

CDH1 a single-pass type I membrane protein, and calcium dependent cell adhesion proteins. It is a ligand for integrin alpha-E/beta-7, and it colocalizes with DLG7 at sites of cell-cell contact in intestinal epithelial cells.

Background

CDH1 a single-pass type I membrane protein, and calcium dependent cell adhesion proteins. It is a ligand for integrin alpha-E/beta-7, and it colocalizes with DLG7 at sites of cell-cell contact in intestinal epithelial cells.

Note: This product is for in vitro research use only