

beta Catenin Rabbit mAb

Catalog No: #58514

Package Size: #58514-1 50ul #58514-2 100ul

Orders: order@signalwayantibody.com

Support: tech@signalwayantibody.com

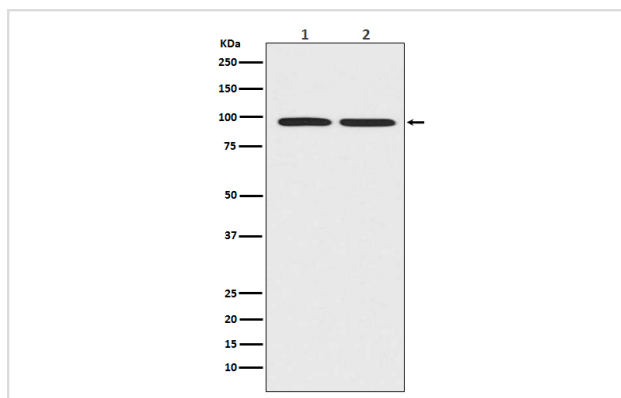
Description

Product Name	beta Catenin Rabbit mAb
Host Species	Rabbit
Clonality	Monoclonal
Isotype	Rabbit IgG
Purification	Affinity-chromatography
Applications	WB IHC ICC/IF IP
Species Reactivity	Human Mouse Rat
Specificity	beta Catenin Antibody detects endogenous levels of total beta Catenin
Immunogen Description	A synthesized peptide derived from human beta Catenin
Other Names	CATNB; CTNB1; CTNNB; catenin beta;
Accession No.	Uniprot:P35222
Uniprot	P35222
Formulation	Rabbit IgG in phosphate buffered saline , pH 7.4, 150mM NaCl, 0.02% sodium azide and 50% glycerol.
Storage	Store at +4°C short term. Store at -20°C long term. Avoid freeze / thaw cycle.

Application Details

WB 1:1000~1:2000 IHC 1:50~1:200 ICC/IF 1:50~1:200 IP 1:50

Images

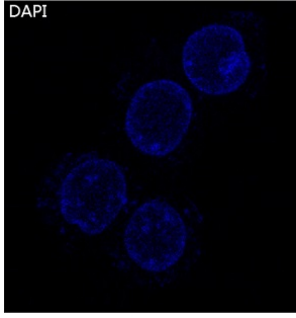


Western blot analysis of beta catenin expression in (1) A431 cell lysates; (2) PC-12 cell lysates.

beta Catenin Antibody



DAPI



Immunofluorescent analysis of A431 cells, using beta Catenin Antibody .

Product Description

Beta-catenin is an adherens junction protein. Adherens junctions (AJs; also called the zonula adherens) are critical for the establishment and maintenance of epithelial layers, such as those lining organ surfaces. AJs mediate adhesion between cells, communicate a signal that neighboring cells are present, and anchor the actin cytoskeleton. In serving these roles, AJs regulate normal cell growth and behavior.

Background

Beta-catenin is an adherens junction protein. Adherens junctions (AJs; also called the zonula adherens) are critical for the establishment and maintenance of epithelial layers, such as those lining organ surfaces. AJs mediate adhesion between cells, communicate a signal that neighboring cells are present, and anchor the actin cytoskeleton. In serving these roles, AJs regulate normal cell growth and behavior.

Note: This product is for in vitro research use only