

## DSG1 Rabbit mAb

Catalog No: #58515

Package Size: #58515-1 50ul #58515-2 100ul

Orders: [order@signalwayantibody.com](mailto:order@signalwayantibody.com)Support: [tech@signalwayantibody.com](mailto:tech@signalwayantibody.com)

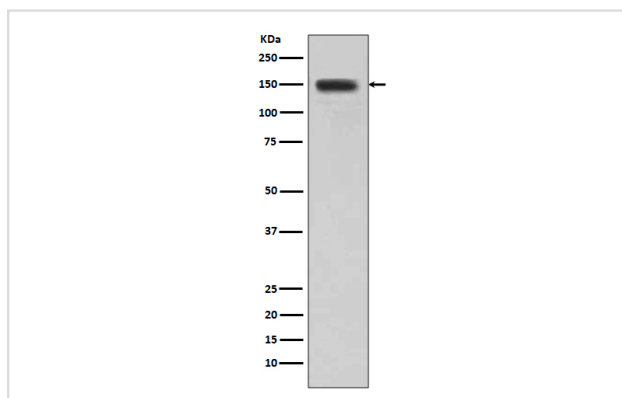
## Description

Product Name	DSG1 Rabbit mAb
Host Species	Rabbit
Clonality	Monoclonal
Isotype	Rabbit IgG
Purification	Affinity-chromatography
Applications	WB IHC ICC/IF
Species Reactivity	Human Mouse Rat
Specificity	DSG1 Antibody detects endogenous levels of total DSG1
Immunogen Description	A synthesized peptide derived from human DSG1
Other Names	Desmoglein-1; Desmosomal glycoprotein 1; DG1; DGI; Pemphigus foliaceus antigen; Cadherin family member 4; DSG1; CDHF4
Accession No.	Uniprot:Q02413
Uniprot	Q02413
Formulation	Rabbit IgG in phosphate buffered saline , pH 7.4, 150mM NaCl, 0.02% sodium azide and 50% glycerol.
Storage	Store at +4°C short term. Store at -20°C long term. Avoid freeze / thaw cycle.

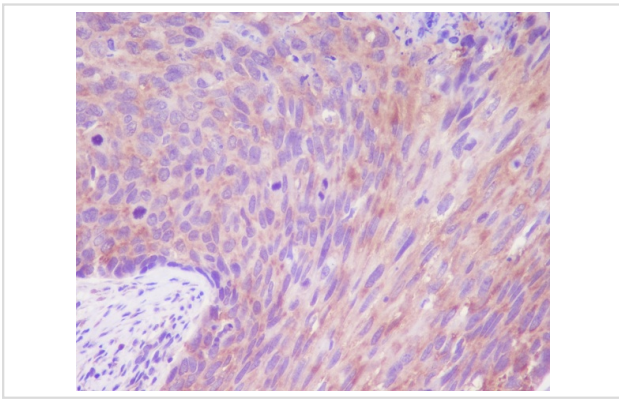
## Application Details

WB 1:500~1:2000 IHC 1:50~1:200

## Images



Western blot analysis of DSG1 expression in human skin lysate.



Immunohistochemical analysis of paraffin-embedded human cervix cancer, using DSG1 Antibody.

## Product Description

Component of intercellular desmosome junctions. Involved in the interaction of plaque proteins and intermediate filaments mediating cell-cell adhesion.

## Background

Component of intercellular desmosome junctions. Involved in the interaction of plaque proteins and intermediate filaments mediating cell-cell adhesion.

Note: This product is for in vitro research use only