

MKLP1 Rabbit mAb

Catalog No: #58517

Package Size: #58517-1 50ul #58517-2 100ul

Orders: order@signalwayantibody.comSupport: tech@signalwayantibody.com

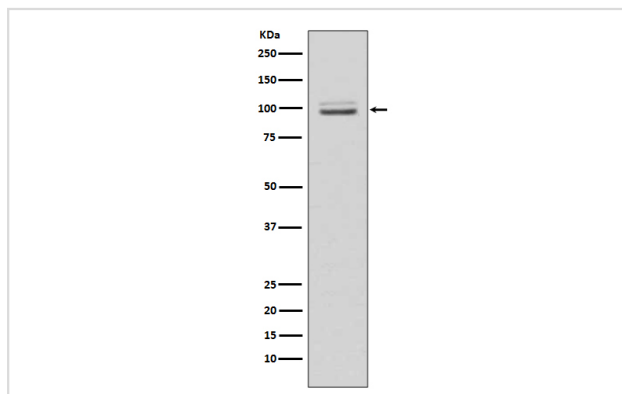
Description

Product Name	MKLP1 Rabbit mAb
Host Species	Rabbit
Clonality	Monoclonal
Isotype	Rabbit IgG
Purification	Affinity-chromatography
Applications	WB ICC/IF
Species Reactivity	Human Mouse Rat
Specificity	MKLP1 Antibody detects endogenous levels of total MKLP1
Immunogen Description	A synthesized peptide derived from human MKLP1
Other Names	CHO 1;CHO1;KIF 23;KIF23;;KNS L5;KNSL 5;KNSL5;Mitotic kinesin like 1;Mitotic kinesin like protein 1;MKLP 1;
Accession No.	Uniprot:Q02241
Uniprot	Q02241
Calculated MW	98 kDa
Formulation	Rabbit IgG in phosphate buffered saline , pH 7.4, 150mM NaCl, 0.02% sodium azide and 50% glycerol.
Storage	Store at +4°C short term. Store at -20°C long term. Avoid freeze / thaw cycle.

Application Details

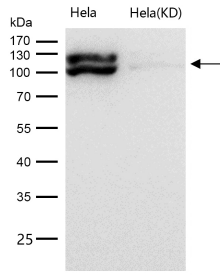
WB 1:500~1:2000 ICC/IF 1:50~1:200

Images



Western blot analysis of MKLP1 expression in HeLa cell lysate.

All lanes use the Antibody at 1:1K dilution for 1 hour at room temperature.



Product Description

Plus-end-directed motor enzyme that moves antiparallel microtubules in vitro. Localizes to the interzone of mitotic spindles.

Background

Plus-end-directed motor enzyme that moves antiparallel microtubules in vitro. Localizes to the interzone of mitotic spindles.

Note: This product is for in vitro research use only