

KIFC1 Rabbit mAb

Catalog No: #58518

Package Size: #58518-1 50ul #58518-2 100ul

Orders: order@signalwayantibody.com

Support: tech@signalwayantibody.com

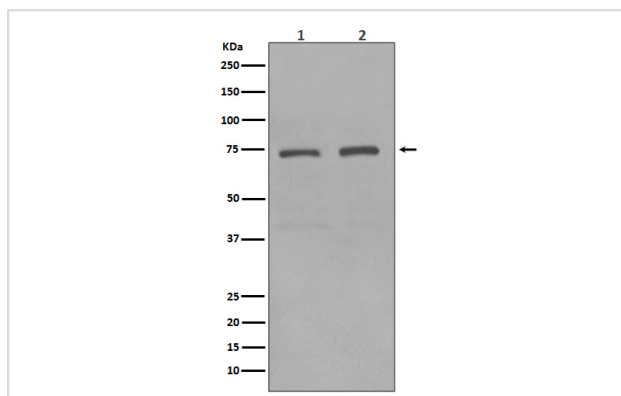
Description

Product Name	KIFC1 Rabbit mAb
Host Species	Rabbit
Clonality	Monoclonal
Isotype	Rabbit IgG
Purification	Affinity-chromatography
Applications	WB IHC ICC/IF IP
Species Reactivity	Human
Specificity	KIFC1 Antibody detects endogenous levels of total KIFC1
Immunogen Description	A synthesized peptide derived from human KIFC1
Other Names	HSET; HSET KNSL2; KIFC1; Kinesin family member C1; KNSL2; MKLP2; RAB6 KIFL; Rabkinesin 6;
Accession No.	Uniprot:Q9BW19
Uniprot	Q9BW19
Formulation	Rabbit IgG in phosphate buffered saline , pH 7.4, 150mM NaCl, 0.02% sodium azide and 50% glycerol.
Storage	Store at +4°C short term. Store at -20°C long term. Avoid freeze / thaw cycle.

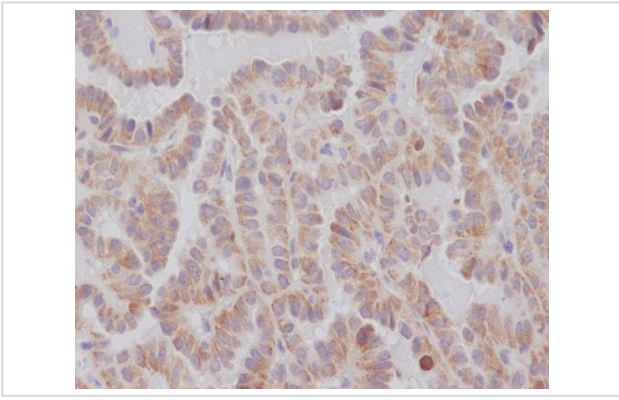
Application Details

WB 1:1000~1:2000 IHC 1:50~1:200 ICC/IF 1:50~1:200 IP 1:50

Images



Western blot analysis of KIFC1 expression in (1) HeLa cell lysate; (2) HepG2 cell lysate.



Immunohistochemical analysis of paraffin-embedded human thyroid carcinoma, using KIFC1 Antibody.

Product Description

Minus end-directed microtubule-dependent motor required for bipolar spindle formation. May contribute to movement of early endocytic vesicles.

Background

Minus end-directed microtubule-dependent motor required for bipolar spindle formation. May contribute to movement of early endocytic vesicles.

Note: This product is for in vitro research use only