

Aurora B Rabbit mAb

Catalog No: #58520

Package Size: #58520-1 50ul #58520-2 100ul

Orders: order@signalwayantibody.com

Support: tech@signalwayantibody.com

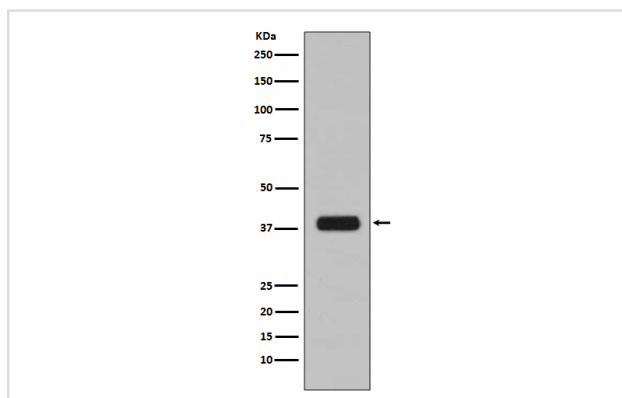
Description

Product Name	Aurora B Rabbit mAb
Host Species	Rabbit
Clonality	Monoclonal
Isotype	Rabbit IgG
Purification	Affinity-chromatography
Applications	WB IHC ICC/IF IP
Species Reactivity	Human
Specificity	Aurora B Antibody detects endogenous levels of total Aurora B
Immunogen Description	A synthesized peptide derived from human Aurora B
Other Names	AIK2; AIM1; ARK2; AURKB; Aurora- and Ipl1-like midbody-associated protein 1; Aurora-B; Aurora/IPL1-related kinase 2; STK-1; STK12;
Accession No.	Uniprot:Q96GD4
Uniprot	Q96GD4
Formulation	Rabbit IgG in phosphate buffered saline , pH 7.4, 150mM NaCl, 0.02% sodium azide and 50% glycerol.
Storage	Store at +4°C short term. Store at -20°C long term. Avoid freeze / thaw cycle.

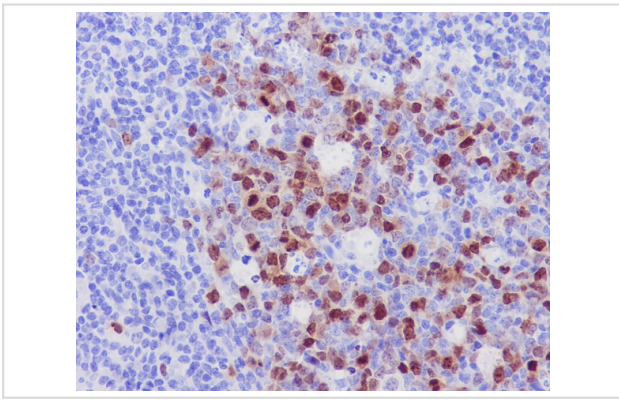
Application Details

WB 1:1000~1:2000 IHC 1:50~1:200 ICC/IF 1:50~1:200 IP 1:50

Images



Western blot analysis of Aurora B expression in HeLa cell lysate.



Immunohistochemical analysis of paraffin-embedded human tonsil, using Aurora B Antibody.

Product Description

May be directly involved in regulating the cleavage of polar spindle microtubules and is a key regulator for the onset of cytokinesis during mitosis. Component of the chromosomal passenger complex (CPC), a complex that acts as a key regulator of mitosis. The CPC complex has essential functions at the centromere in ensuring correct chromosome alignment and segregation and is required for chromatin-induced microtubule stabilization and spindle assembly.

Background

May be directly involved in regulating the cleavage of polar spindle microtubules and is a key regulator for the onset of cytokinesis during mitosis. Component of the chromosomal passenger complex (CPC), a complex that acts as a key regulator of mitosis. The CPC complex has essential functions at the centromere in ensuring correct chromosome alignment and segregation and is required for chromatin-induced microtubule stabilization and spindle assembly.

Note: This product is for in vitro research use only