

Caveolin-2 Rabbit mAb

Catalog No: #58523

Package Size: #58523-1 50ul #58523-2 100ul

Orders: order@signalwayantibody.com

Support: tech@signalwayantibody.com

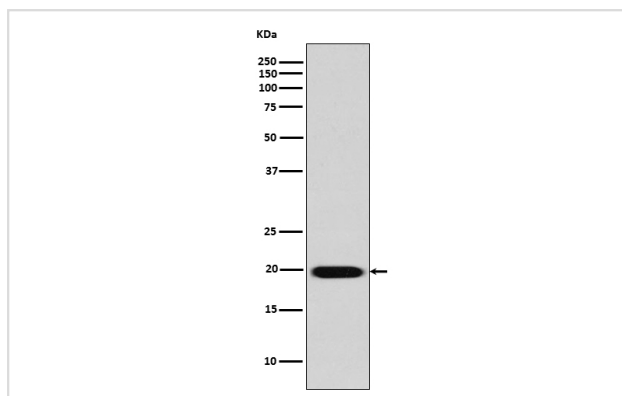
Description

Product Name	Caveolin-2 Rabbit mAb
Host Species	Rabbit
Clonality	Monoclonal
Isotype	Rabbit IgG
Purification	Affinity-chromatography
Applications	WB IHC ICC/IF IP
Species Reactivity	Human
Specificity	Caveolin-2 Antibody detects endogenous levels of total Caveolin-2
Immunogen Description	A synthesized peptide derived from human Caveolin-2
Other Names	CAV2; Caveolae protein 20 Kd; Caveolin 2; Caveolin 2 isoform a and b; Caveolin-2;
Accession No.	Uniprot:P51636
Uniprot	P51636
Formulation	Rabbit IgG in phosphate buffered saline , pH 7.4, 150mM NaCl, 0.02% sodium azide and 50% glycerol.
Storage	Store at +4°C short term. Store at -20°C long term. Avoid freeze / thaw cycle.

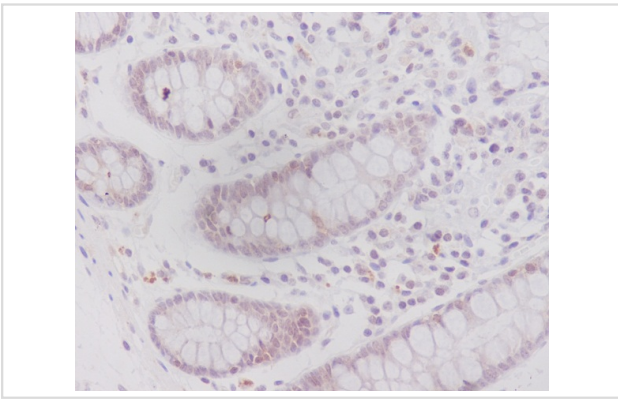
Application Details

WB 1:500~1:2000 IHC 1:50~1:200 ICC/IF 1:50~1:200 IP 1:50

Images



Western blot analysis of Caveolin 2 expression in HeLa cell lysate.



Immunohistochemical analysis of paraffin-embedded human colon, using Caveolin-2 Antibody.

Product Description

May act as a scaffolding protein within caveolar membranes. Interacts directly with G-protein alpha subunits and can functionally regulate their activity. Acts as an accessory protein in conjunction with CAV1 in targeting to lipid rafts and driving caveolae formation.

Background

May act as a scaffolding protein within caveolar membranes. Interacts directly with G-protein alpha subunits and can functionally regulate their activity. Acts as an accessory protein in conjunction with CAV1 in targeting to lipid rafts and driving caveolae formation.

Note: This product is for in vitro research use only