

SIRT1 Rabbit mAb

Catalog No: #58535

Package Size: #58535-1 50ul #58535-2 100ul

Orders: order@signalwayantibody.comSupport: tech@signalwayantibody.com

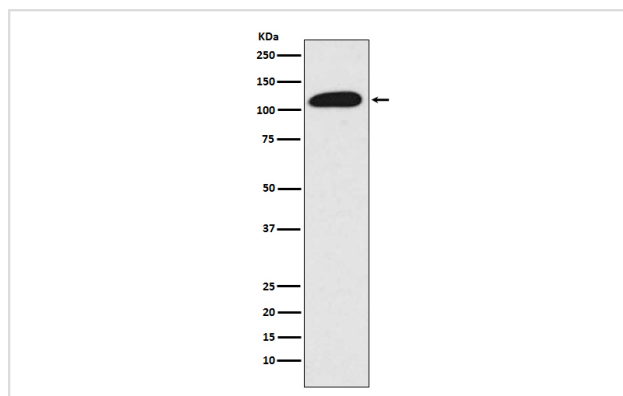
Description

Product Name	SIRT1 Rabbit mAb
Host Species	Rabbit
Clonality	Monoclonal
Isotype	Rabbit IgG
Purification	Affinity-chromatography
Applications	WB IHC ICC/IF IP
Species Reactivity	Human
Specificity	SIRT1 Antibody detects endogenous levels of total SIRT1
Immunogen Description	A synthesized peptide derived from human SIRT1
Other Names	hSIR2; hSIRT1; NAD-dependent deacetylase sirtuin 1; SIR1; SIR2-like protein 1; SIR2L1; sirtuin 1
Accession No.	Uniprot:Q96EB6
Uniprot	Q96EB6
Formulation	Rabbit IgG in phosphate buffered saline , pH 7.4, 150mM NaCl, 0.02% sodium azide and 50% glycerol.
Storage	Store at +4°C short term. Store at -20°C long term. Avoid freeze / thaw cycle.

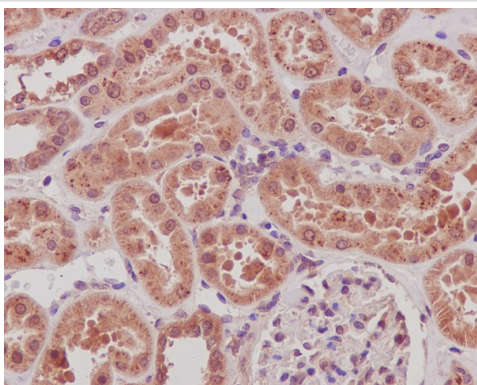
Application Details

WB 1:500~1:2000 IHC 1:50~1:200 ICC/IF 1:50~1:200 IP 1:30

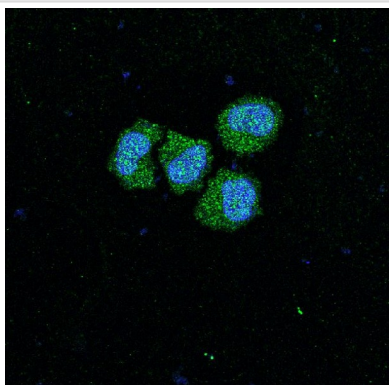
Images



Western blot analysis of Sir2/SIRT1 expression in Jurkat cell lysate.



Immunohistochemical analysis of paraffin-embedded human kidney, using SIRT1 Antibody.



Immunofluorescent analysis of HeLa cells, using SIRT1 Antibody .

Product Description

This gene encodes a member of the sirtuin family of proteins, homologs to the yeast Sir2 protein. Members of the sirtuin family are characterized by a sirtuin core domain and grouped into four classes. The functions of human sirtuins have not yet been determined; however, yeast sirtuin proteins are known to regulate epigenetic gene silencing and suppress recombination of rDNA.

Background

This gene encodes a member of the sirtuin family of proteins, homologs to the yeast Sir2 protein. Members of the sirtuin family are characterized by a sirtuin core domain and grouped into four classes. The functions of human sirtuins have not yet been determined; however, yeast sirtuin proteins are known to regulate epigenetic gene silencing and suppress recombination of rDNA.

Note: This product is for in vitro research use only