

AIF Rabbit mAb

Catalog No: #58536

Package Size: #58536-1 50ul #58536-2 100ul

Orders: order@signalwayantibody.com

Support: tech@signalwayantibody.com

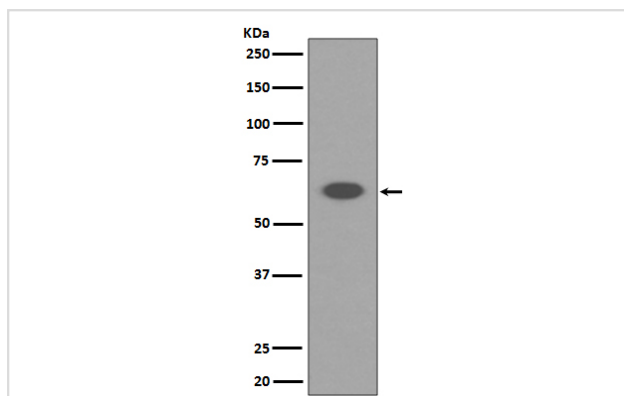
Description

Product Name	AIF Rabbit mAb
Host Species	Rabbit
Clonality	Monoclonal
Isotype	Rabbit IgG
Purification	Affinity-chromatography
Applications	WB IHC ICC/IF IP FC
Species Reactivity	Human Mouse Rat
Specificity	AIF Antibody detects endogenous levels of total AIF
Immunogen Description	A synthesized peptide derived from human AIF
Other Names	AIFM1; AIF; PDCD8; COXPD6;
Accession No.	Uniprot:O95831
Uniprot	O95831
Formulation	Rabbit IgG in phosphate buffered saline , pH 7.4, 150mM NaCl, 0.02% sodium azide and 50% glycerol.
Storage	Store at +4°C short term. Store at -20°C long term. Avoid freeze / thaw cycle.

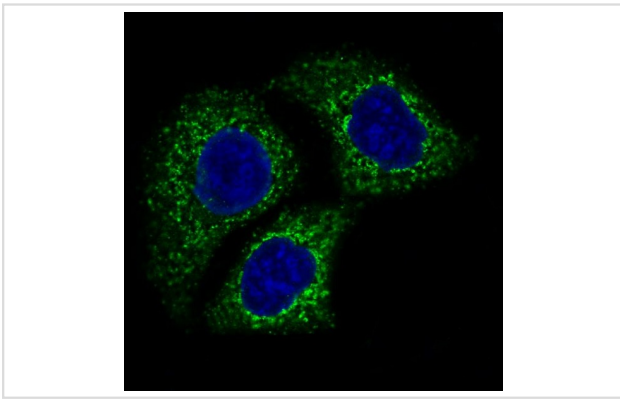
Application Details

WB 1:500~1:2000 IHC 1:100~1:500 ICC/IF 1:100~1:500 IP 1:50 FC 1:50

Images



Western blot analysis of AIF expression in K562 cell lysate.



Immunofluorescent analysis of HeLa cells, using AIF Antibody .

Product Description

This gene encodes a flavoprotein essential for nuclear disassembly in apoptotic cells, and it is found in the mitochondrial intermembrane space in healthy cells. Induction of apoptosis results in the translocation of this protein to the nucleus where it affects chromosome condensation and fragmentation.

Background

This gene encodes a flavoprotein essential for nuclear disassembly in apoptotic cells, and it is found in the mitochondrial intermembrane space in healthy cells. Induction of apoptosis results in the translocation of this protein to the nucleus where it affects chromosome condensation and fragmentation.

Note: This product is for in vitro research use only