

IKB alpha Rabbit mAb

Catalog No: #58537



Package Size: #58537-1 50ul #58537-2 100ul

Orders: [order@signalwayantibody.com](mailto:order@signalwayantibody.com)  
Support: [tech@signalwayantibody.com](mailto:tech@signalwayantibody.com)

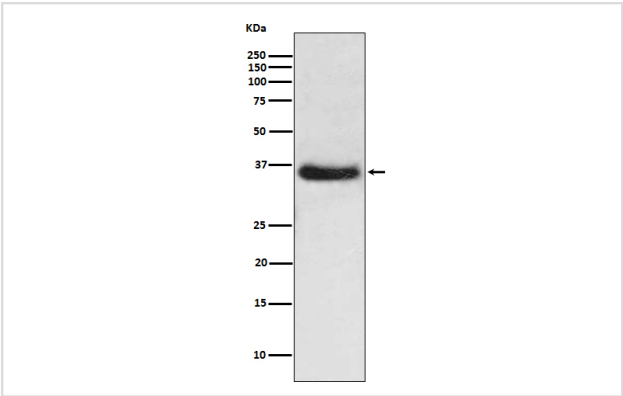
Description

Product Name	IKB alpha Rabbit mAb
Host Species	Rabbit
Clonality	Monoclonal
Isotype	Rabbit IgG
Purification	Affinity-chromatography
Applications	WB IHC ICC/IF IP
Species Reactivity	Human Mouse Rat
Specificity	IKB alpha Antibody detects endogenous levels of total IKB alpha
Immunogen Description	A synthesized peptide derived from human IKB alpha
Other Names	I-kappa-B-alpha; NFKBI; NFKBIA; NF-kappaB inhibitor alpha; IKBA; IkappaBalph; MAD3; RL/IF-1;
Accession No.	Uniprot:P25963
Uniprot	P25963
Formulation	Rabbit IgG in phosphate buffered saline , pH 7.4, 150mM NaCl, 0.02% sodium azide and 50% glycerol.
Storage	Store at +4°C short term. Store at -20°C long term. Avoid freeze / thaw cycle.

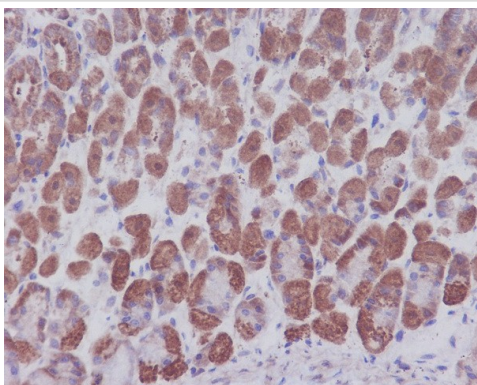
Application Details

WB 1:500~1:2000 IHC 1:50~1:200 ICC/IF 1:50~1:200 IP 1:30

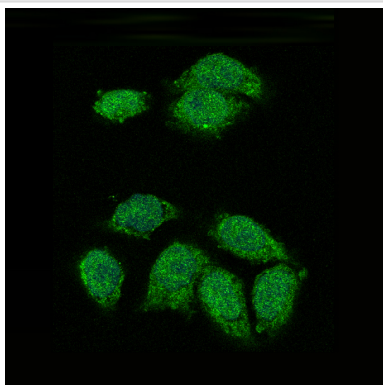
Images



Western blot analysis of IKB alpha expression in HeLa cell lysate.



Immunohistochemical analysis of paraffin-embedded mouse stomach, using IKB alpha Antibody.



Immunofluorescent analysis of Hela cells, using IKB alpha Antibody .

## Product Description

NFKB1 (MIM 164011) or NFKB2 (MIM 164012) is bound to REL (MIM 164910), RELA (MIM 164014), or RELB (MIM 604758) to form the NFKB complex. The NFKB complex is inhibited by I-kappa-B proteins (NFKBIA or NFKBIB, MIM 604495), which inactivate NF-kappa-B by trapping it in the cytoplasm.

## Background

NFKB1 (MIM 164011) or NFKB2 (MIM 164012) is bound to REL (MIM 164910), RELA (MIM 164014), or RELB (MIM 604758) to form the NFKB complex. The NFKB complex is inhibited by I-kappa-B proteins (NFKBIA or NFKBIB, MIM 604495), which inactivate NF-kappa-B by trapping it in the cytoplasm.

Note: This product is for in vitro research use only