

alpha smooth muscle Actin Rabbit mAb

Catalog No: #58538

Package Size: #58538-1 50ul #58538-2 100ul

Orders: order@signalwayantibody.com

Support: tech@signalwayantibody.com

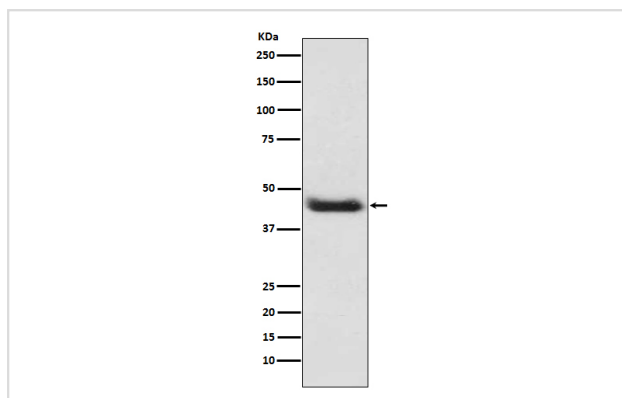
Description

Product Name	alpha smooth muscle Actin Rabbit mAb
Host Species	Rabbit
Clonality	Monoclonal
Isotype	Rabbit IgG
Purification	Affinity-chromatography
Applications	WB IHC IP FC
Species Reactivity	Human Mouse Rat
Specificity	alpha smooth muscle Actin Antibody detects endogenous levels of total alpha smooth muscle Actin
Immunogen Description	A synthesized peptide derived from human alpha smooth muscle Actin
Other Names	Actin, aortic smooth muscle; Alpha-actin-2; ACTA2; ACTSA; ACTVS; GIG46;
Accession No.	Uniprot:P62736
Uniprot	P62736
Formulation	Rabbit IgG in phosphate buffered saline , pH 7.4, 150mM NaCl, 0.02% sodium azide and 50% glycerol.
Storage	Store at +4°C short term. Store at -20°C long term. Avoid freeze / thaw cycle.

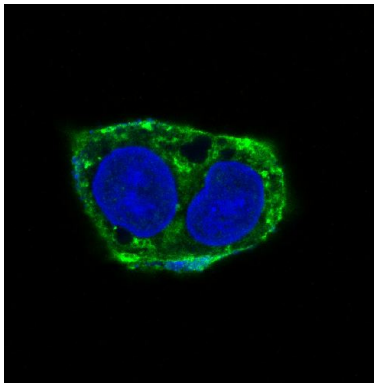
Application Details

WB 1:500~1:2000 IHC 1:50~1:200 IP 1:30

Images



Western blot analysis of alpha smooth muscle Actin expression in A431 cell lysate.



Immunofluorescent analysis of HepG2 cells, using alpha smooth muscle Actin Antibody .

Product Description

Defects in ACTA2 are the cause of aortic aneurysm familial thoracic type 6 (AAT6) [MIM:611788]. AATs are characterized by permanent dilation of the thoracic aorta usually due to degenerative changes in the aortic wall.

Background

Defects in ACTA2 are the cause of aortic aneurysm familial thoracic type 6 (AAT6) [MIM:611788]. AATs are characterized by permanent dilation of the thoracic aorta usually due to degenerative changes in the aortic wall.

Note: This product is for in vitro research use only