

## Cytokeratin 18 Rabbit mAb

Catalog No: #58539

Package Size: #58539-1 50ul #58539-2 100ul

Orders: order@signalwayantibody.com

Support: tech@signalwayantibody.com

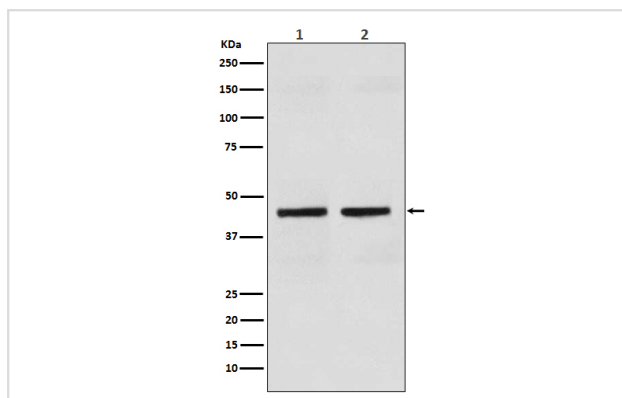
## Description

Product Name	Cytokeratin 18 Rabbit mAb
Host Species	Rabbit
Clonality	Monoclonal
Isotype	Rabbit IgG
Purification	Affinity-chromatography
Applications	WB IHC ICC/IF FC
Species Reactivity	Human
Specificity	Cytokeratin 18 Antibody detects endogenous levels of total Cytokeratin 18
Immunogen Description	A synthesized peptide derived from human Cytokeratin 18
Other Names	Keratin-18; CYK18; cytokeratin 18; Cytokeratin-18; K18; K1C18; keratin 18; KRT18; CK-18;
Accession No.	Uniprot:P05783
Uniprot	P05783
Formulation	Rabbit IgG in phosphate buffered saline , pH 7.4, 150mM NaCl, 0.02% sodium azide and 50% glycerol.
Storage	Store at +4°C short term. Store at -20°C long term. Avoid freeze / thaw cycle.

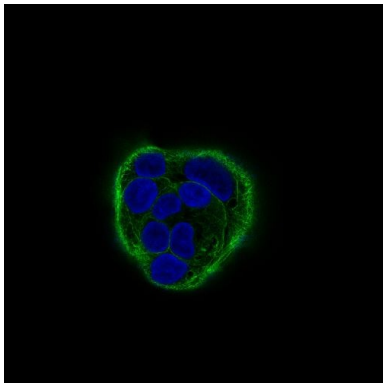
## Application Details

WB 1:500~1:2000 IHC 1:50~1:200 ICC/IF 1:50~1:200 FC 1:50

## Images



Western blot analysis of Cytokeratin 18 expression in (1) HT-29 cell lysate;(2) human kidney lysate.



Immunofluorescent analysis of HACAT cells, using Cytokeratin 18 Antibody .

## Product Description

K18 a type I cytoskeletal keratin. The keratins are intermediate filament proteins responsible for the structural integrity of epithelial cells and are subdivided into cytokeratins and hair keratins. Keratin 18 and its filament partner keratin 8 are perhaps the most commonly found members of the intermediate filament gene family.

## Background

K18 a type I cytoskeletal keratin. The keratins are intermediate filament proteins responsible for the structural integrity of epithelial cells and are subdivided into cytokeratins and hair keratins. Keratin 18 and its filament partner keratin 8 are perhaps the most commonly found members of the intermediate filament gene family.

Note: This product is for in vitro research use only