

ErbB4 (HER4) Rabbit mAb

Catalog No: #58540

Package Size: #58540-1 50ul #58540-2 100ul

Orders: order@signalwayantibody.com

Support: tech@signalwayantibody.com

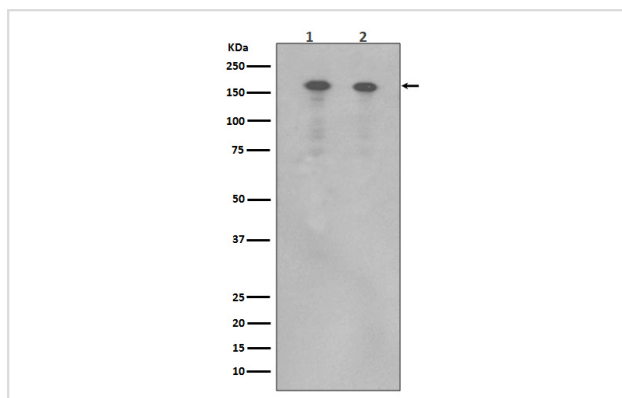
Description

Product Name	ErbB4 (HER4) Rabbit mAb
Host Species	Rabbit
Clonality	Monoclonal
Isotype	Rabbit IgG
Purification	Affinity-chromatography
Applications	WB ICC FC IP
Species Reactivity	Human Mouse Rat
Specificity	ErbB4 (HER4) Antibody detects endogenous levels of total ErbB4 (HER4)
Immunogen Description	A synthesized peptide derived from human ErbB4 (HER4)
Other Names	ERBB4; HER4; kinase ErbB4; p180erbB4;
Accession No.	Uniprot:Q15303
Uniprot	Q15303
Formulation	Rabbit IgG in phosphate buffered saline , pH 7.4, 150mM NaCl, 0.02% sodium azide and 50% glycerol.
Storage	Store at +4°C short term. Store at -20°C long term. Avoid freeze / thaw cycle.

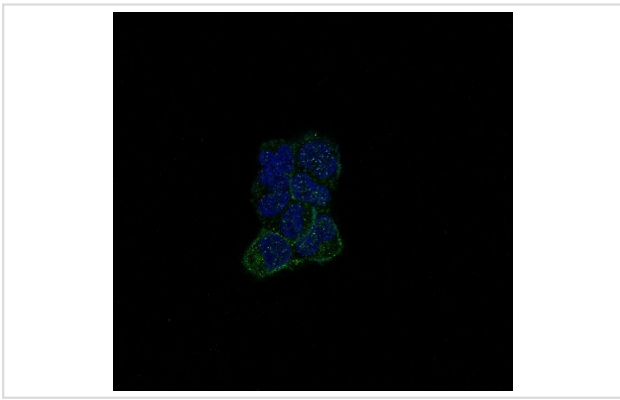
Application Details

WB 1:500~1:2000 ICC/IF 1:50~1:200 FC 1:40 IP 1:30

Images



Western blot analysis of ErbB4 (HER4) expression in (1) Human brain lysate; (2) MCF-7 cell lysate.



Immunofluorescent analysis of A673 cells, using ErbB4 (HER4) Antibody .

Product Description

The HER4/ERBB4 gene is a member of the type I receptor tyrosine kinase subfamily that includes EGFR (MIM 131550), ERBB2 (MIM 164870), and ERBB3 (MIM 190151). It encodes a receptor for NDF/hereregulin (MIM 142445).

Background

The HER4/ERBB4 gene is a member of the type I receptor tyrosine kinase subfamily that includes EGFR (MIM 131550), ERBB2 (MIM 164870), and ERBB3 (MIM 190151). It encodes a receptor for NDF/hereregulin (MIM 142445).

Note: This product is for in vitro research use only