

Cleaved PARP Rabbit mAb

Catalog No: #58545

Package Size: #58545-1 50ul #58545-2 100ul

Orders: order@signalwayantibody.com

Support: tech@signalwayantibody.com

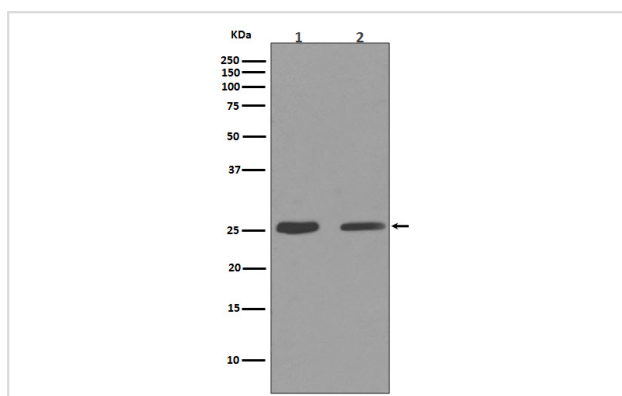
Description

Product Name	Cleaved PARP Rabbit mAb
Host Species	Rabbit
Clonality	Monoclonal
Isotype	Rabbit IgG
Purification	Affinity-chromatography
Applications	WB IHC
Species Reactivity	Human Mouse Rat
Specificity	This antibody is specific for the p25 cleaved form of human PARP.
Immunogen Description	A synthesized peptide derived from human Cleaved PARP
Other Names	PPOL; ADPRT; ADPRT1; pADPRT-1; PARP; PARP-1;
Accession No.	Uniprot:P09874
Uniprot	P09874
Formulation	Rabbit IgG in phosphate buffered saline , pH 7.4, 150mM NaCl, 0.02% sodium azide and 50% glycerol.
Storage	Store at +4°C short term. Store at -20°C long term. Avoid freeze / thaw cycle.

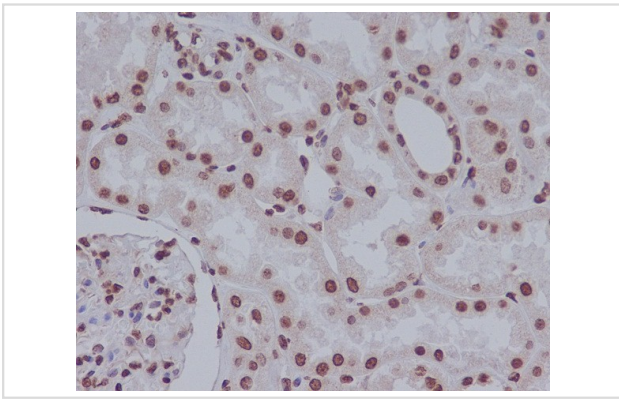
Application Details

WB 1:500~1:2000 IHC 1:50~1:100

Images



Western blot analysis of Cleaved PARP expression in (1) RAW264.7 cell lysate;(2) NIH/3T3 cell lysate.



Immunohistochemical analysis of paraffin-embedded human kidney, using Cleaved PARP Antibody.

Product Description

Involved in the base excision repair (BER) pathway, by catalyzing the poly(ADP-ribosyl)ation of a limited number of acceptor proteins involved in chromatin architecture and in DNA metabolism. This modification follows DNA damages and appears as an obligatory step in a detection/signaling pathway leading to the reparation of DNA strand breaks.

Background

Involved in the base excision repair (BER) pathway, by catalyzing the poly(ADP-ribosyl)ation of a limited number of acceptor proteins involved in chromatin architecture and in DNA metabolism. This modification follows DNA damages and appears as an obligatory step in a detection/signaling pathway leading to the reparation of DNA strand breaks.

Note: This product is for in vitro research use only