

ATF2 Rabbit mAb

Catalog No: #58546



Package Size: #58546-1 50ul #58546-2 100ul

Orders: [order@signalwayantibody.com](mailto:order@signalwayantibody.com)  
Support: [tech@signalwayantibody.com](mailto:tech@signalwayantibody.com)

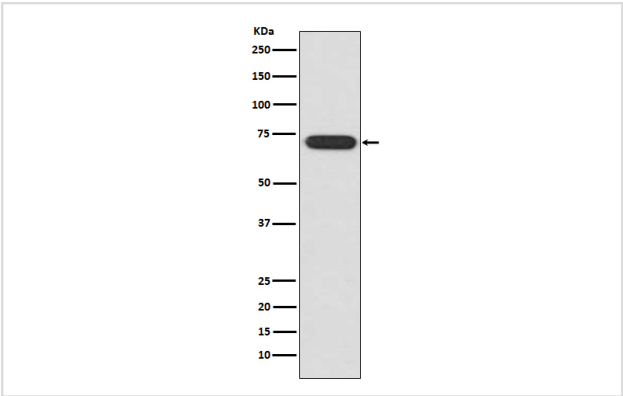
Description

Product Name	ATF2 Rabbit mAb
Host Species	Rabbit
Clonality	Monoclonal
Isotype	Rabbit IgG
Purification	Affinity-chromatography
Applications	WB IHC ICC/IF IP
Species Reactivity	Human
Specificity	ATF2 Antibody detects endogenous levels of total ATF2
Immunogen Description	A synthesized peptide derived from human ATF2
Other Names	ATF2; Activating 2; CREB2; CREBP1; Cyclic-AMP-dependent ATF-2; HB16; MXBP protein;
Accession No.	Uniprot:P15336
Uniprot	P15336
Formulation	Rabbit IgG in phosphate buffered saline , pH 7.4, 150mM NaCl, 0.02% sodium azide and 50% glycerol.
Storage	Store at +4°C short term. Store at -20°C long term. Avoid freeze / thaw cycle.

Application Details

WB 1:500~1:2000 IHC 1:50~1:100 ICC/IF 1:50~1:100 IP 1:30

Images



Western blot analysis of ATF2 expression in HeLa cell lysate.

CY5037 ATF2 Antibody

DAPI

Immunofluorescent analysis of Hela cells, using ATF2 Antibody .

## Product Description

This gene encodes a transcription factor that is a member of the leucine zipper family of DNA binding proteins. This protein binds to the cAMP-responsive element (CRE), an octameric palindrome. The protein forms a homodimer or heterodimer with c-Jun and stimulates CRE-dependent transcription. The protein is also a histone acetyltransferase (HAT) that specifically acetylates histones H2B and H4 in vitro;

## Background

This gene encodes a transcription factor that is a member of the leucine zipper family of DNA binding proteins. This protein binds to the cAMP-responsive element (CRE), an octameric palindrome. The protein forms a homodimer or heterodimer with c-Jun and stimulates CRE-dependent transcription. The protein is also a histone acetyltransferase (HAT) that specifically acetylates histones H2B and H4 in vitro;

Note: This product is for in vitro research use only