

## Caspase-8 Rabbit mAb

Catalog No: #58547

Package Size: #58547-1 50ul #58547-2 100ul

Orders: order@signalwayantibody.com

Support: tech@signalwayantibody.com

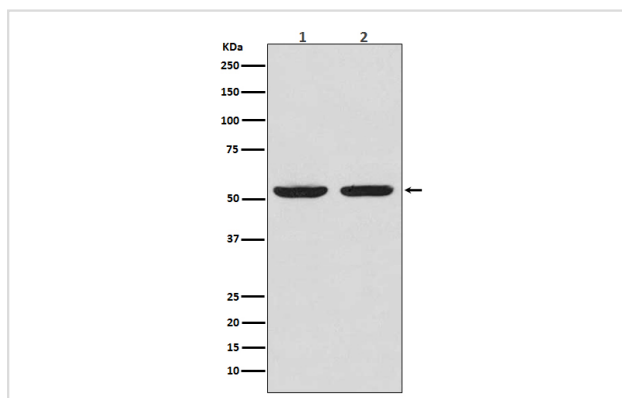
## Description

Product Name	Caspase-8 Rabbit mAb
Host Species	Rabbit
Clonality	Monoclonal
Isotype	Rabbit IgG
Purification	Affinity-chromatography
Applications	WB ICC/IF
Species Reactivity	Human
Specificity	Caspase-8 Antibody detects endogenous levels of total Caspase-8
Immunogen Description	A synthesized peptide derived from human Caspase-8
Other Names	FADD-like ICE; FLICE; ICE8; MACH; MCH5; MORT1-associated CED-3 homolog; CAP4; Caspase-8 precursor;
Accession No.	Uniprot:Q14790
Uniprot	Q14790
Formulation	Rabbit IgG in phosphate buffered saline , pH 7.4, 150mM NaCl, 0.02% sodium azide and 50% glycerol.
Storage	Store at +4°C short term. Store at -20°C long term. Avoid freeze / thaw cycle.

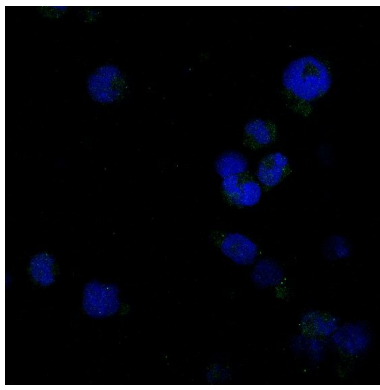
## Application Details

WB 1:500~1:2000 ICC/IF 1:50~1:100

## Images



Western blot analysis of Caspase-8 expression in(1) Jurkat cell lysate; (2)HeLa cell lysate.



Immunofluorescent analysis of K562 cells, using Caspase-8 Antibody .

## Product Description

This gene encodes a protein that is a member of the cysteine-aspartic acid protease (caspase) family. Sequential activation of caspases plays a central role in the execution-phase of cell apoptosis. Caspases exist as inactive proenzymes composed of a prodomain, a large protease subunit, and a small protease subunit.

## Background

This gene encodes a protein that is a member of the cysteine-aspartic acid protease (caspase) family. Sequential activation of caspases plays a central role in the execution-phase of cell apoptosis. Caspases exist as inactive proenzymes composed of a prodomain, a large protease subunit, and a small protease subunit.

Note: This product is for in vitro research use only