

Caspase-9 Rabbit mAb

Catalog No: #58555

Package Size: #58555-1 50ul #58555-2 100ul

Orders: order@signalwayantibody.com

Support: tech@signalwayantibody.com

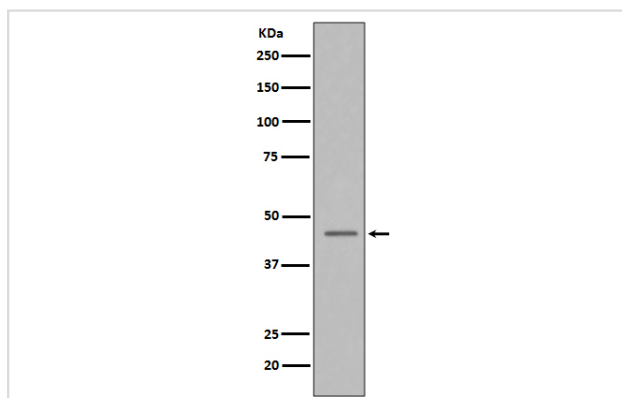
Description

Product Name	Caspase-9 Rabbit mAb
Host Species	Rabbit
Clonality	Monoclonal
Isotype	Rabbit IgG
Purification	Affinity-chromatography
Applications	WB IHC ICC/IF FC IP
Species Reactivity	Human
Specificity	Caspase-9 Antibody detects endogenous levels of total Caspase-9
Immunogen Description	A synthesized peptide derived from human Caspase-9
Other Names	APAF-3; Caspase9; ICE-LAP6; Apoptotic protease Mch-6; CASP-9; Caspase-9; Caspase-9 precursor; MCH6; RNCASP9;
Accession No.	Uniprot:P55211
Uniprot	P55211
Formulation	Rabbit IgG in phosphate buffered saline , pH 7.4, 150mM NaCl, 0.02% sodium azide and 50% glycerol.
Storage	Store at +4°C short term. Store at -20°C long term. Avoid freeze / thaw cycle.

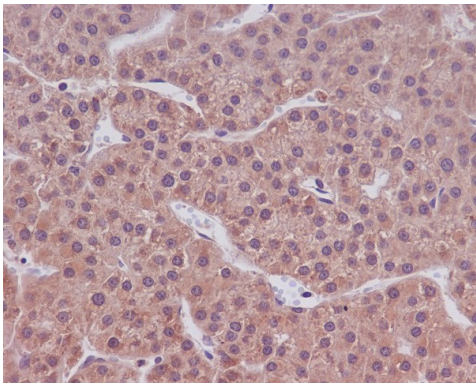
Application Details

WB 1:500~1:2000 IHC 1:50~1:200 ICC/IF 1:50~1:200 IP 1:50

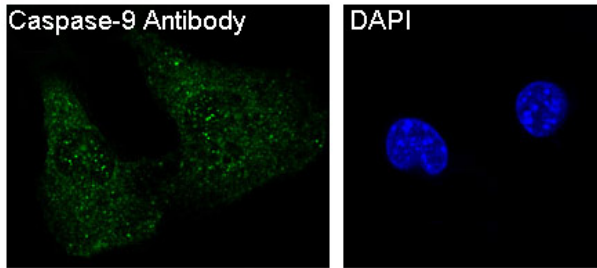
Images



Western blot analysis of Caspase-9 in HeLa cell lysate treated with Camptothecin.



Immunohistochemical analysis of paraffin-embedded human liver cancer, using Caspase-9 Antibody.



Immunofluorescent analysis of 3T3 cells, using Caspase-9 Antibody.

Product Description

Caspase-9 (ICE-LAP6, Mch6) is an important member of the cysteine aspartic acid protease (caspase) family. Upon apoptotic stimulation, cytochrome c released from mitochondria associates with the 47 kDa procaspase-9/Apaf 1. Apaf-1 mediated activation of caspase-9 involves intrinsic proteolytic processing resulting in cleavage at Asp315 and producing a p35 subunit.

Background

Caspase-9 (ICE-LAP6, Mch6) is an important member of the cysteine aspartic acid protease (caspase) family. Upon apoptotic stimulation, cytochrome c released from mitochondria associates with the 47 kDa procaspase-9/Apaf 1. Apaf-1 mediated activation of caspase-9 involves intrinsic proteolytic processing resulting in cleavage at Asp315 and producing a p35 subunit.

Note: This product is for in vitro research use only