

## Chk1 Rabbit mAb

Catalog No: #58564

Package Size: #58564-1 50ul #58564-2 100ul

Orders: order@signalwayantibody.com

Support: tech@signalwayantibody.com

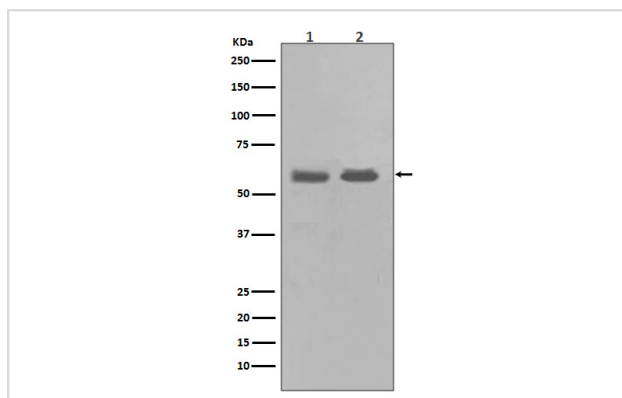
## Description

Product Name	Chk1 Rabbit mAb
Host Species	Rabbit
Clonality	Monoclonal
Isotype	Rabbit IgG
Purification	Affinity-chromatography
Applications	WB ICC/IF IP
Species Reactivity	Human Mouse Rat
Specificity	Chk1 Antibody detects endogenous levels of total Chk1
Immunogen Description	A synthesized peptide derived from human Chk1
Other Names	Serine/threonine-protein kinase Chk1; CHEK1; CHK1
Accession No.	Uniprot:O14757
Uniprot	O14757
Formulation	Rabbit IgG in phosphate buffered saline , pH 7.4, 150mM NaCl, 0.02% sodium azide and 50% glycerol.
Storage	Store at +4°C short term. Store at -20°C long term. Avoid freeze / thaw cycle.

## Application Details

WB 1:500~1:2000 ICC/IF 1:50~1:200 IP 1:30

## Images



Western blot analysis of Chk1 in (1) K562 cell lysate; (2) PC-12 cell lysate.

## Product Description

DNA damage induced protein phosphorylation; regulation of mitotic centrosome separation; regulation of S phase; peptidyl-threonine phosphorylation; DNA repair; chromatin-mediated maintenance of transcription; negative regulation of mitosis;

## Background

---

DNA damage induced protein phosphorylation; regulation of mitotic centrosome separation; regulation of S phase; peptidyl-threonine phosphorylation; DNA repair; chromatin-mediated maintenance of transcription; negative regulation of mitosis;

---

Note: This product is for in vitro research use only