

Sonic Hedgehog Rabbit mAb

Catalog No: #58571

Package Size: #58571-1 50ul #58571-2 100ul

Orders: order@signalwayantibody.com

Support: tech@signalwayantibody.com

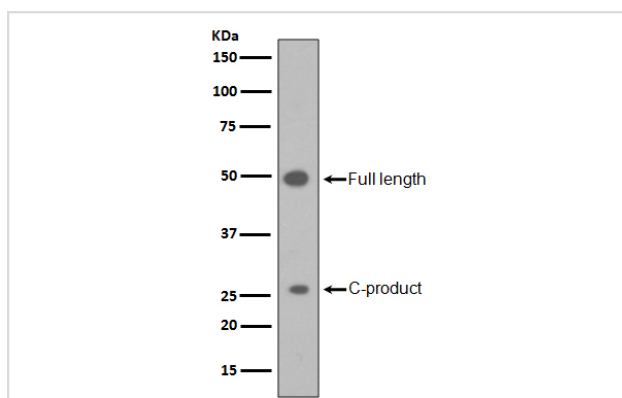
Description

Product Name	Sonic Hedgehog Rabbit mAb
Host Species	Rabbit
Clonality	Monoclonal
Isotype	Rabbit IgG
Purification	Affinity-chromatography
Applications	WB IHC ICC/IF FC
Species Reactivity	Human
Specificity	Sonic Hedgehog Antibody detects endogenous levels of total Sonic Hedgehog
Immunogen Description	A synthesized peptide derived from human Sonic Hedgehog
Other Names	TPT; HHG1; HLP3; HPE3; SMMCI; TPTPS; MCOPCB5; Sonic Hedgehog;
Accession No.	Uniprot:Q15465
Uniprot	Q15465
Formulation	Rabbit IgG in phosphate buffered saline , pH 7.4, 150mM NaCl, 0.02% sodium azide and 50% glycerol.
Storage	Store at +4°C short term. Store at -20°C long term. Avoid freeze / thaw cycle.

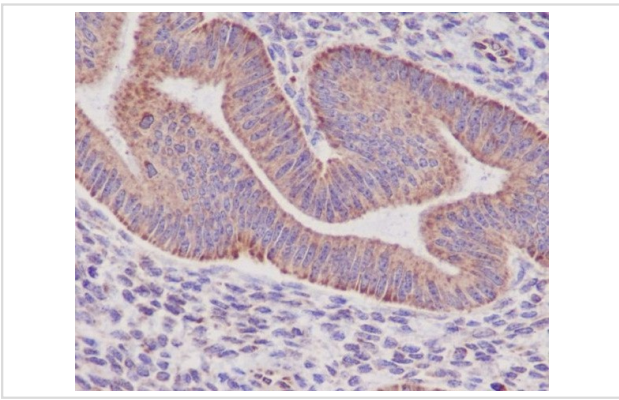
Application Details

WB 1:500~1:2000 IHC 1:50~1:200 ICC/IF 1:50~1:200 FC 1:50

Images



Western blot analysis of Sonic Hedgehog in HepG2 cell lysate.



Immunohistochemical analysis of paraffin-embedded human endometrium, using Sonic Hedgehog Antibody.

Product Description

This gene encodes a protein that is instrumental in patterning the early embryo. It has been implicated as the key inductive signal in patterning of the ventral neural tube, the anterior-posterior limb axis, and the ventral somites. Of three human proteins showing sequence and functional similarity to the sonic hedgehog protein of *Drosophila*, this protein is the most similar.

Background

This gene encodes a protein that is instrumental in patterning the early embryo. It has been implicated as the key inductive signal in patterning of the ventral neural tube, the anterior-posterior limb axis, and the ventral somites. Of three human proteins showing sequence and functional similarity to the sonic hedgehog protein of *Drosophila*, this protein is the most similar.

Note: This product is for in vitro research use only