

Rad51 Rabbit mAb

Catalog No: #58574

Package Size: #58574-1 50ul #58574-2 100ul

Orders: order@signalwayantibody.com

Support: tech@signalwayantibody.com

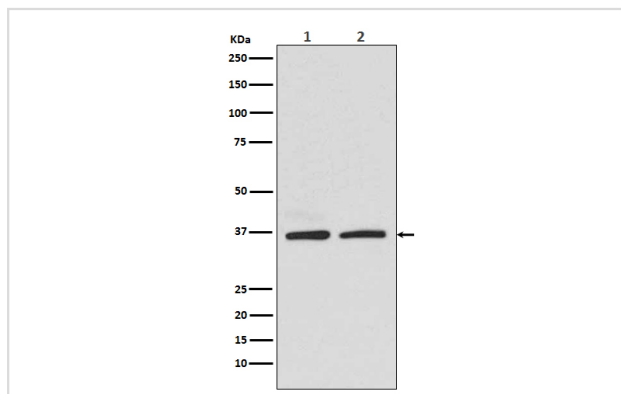
Description

Product Name	Rad51 Rabbit mAb
Host Species	Rabbit
Clonality	Monoclonal
Isotype	Rabbit IgG
Purification	Affinity-chromatography
Applications	WB IHC ICC/IF IP FC
Species Reactivity	Human Mouse Rat
Specificity	Rad51 Antibody detects endogenous levels of total Rad51
Immunogen Description	A synthesized peptide derived from human Rad51
Other Names	RAD51 homolog A; DNA repair protein RAD51 homolog 1; RAD51A; RECAhomolog <i>S. cerevisiae</i> ; RAD51A; RECA; Rad 51; RecA homolog <i>E. coli</i> ; RecA like protein;
Accession No.	Uniprot:Q06609
Uniprot	Q06609
Calculated MW	37kDa
Formulation	Rabbit IgG in phosphate buffered saline , pH 7.4, 150mM NaCl, 0.02% sodium azide and 50% glycerol.
Storage	Store at +4°C short term. Store at -20°C long term. Avoid freeze / thaw cycle.

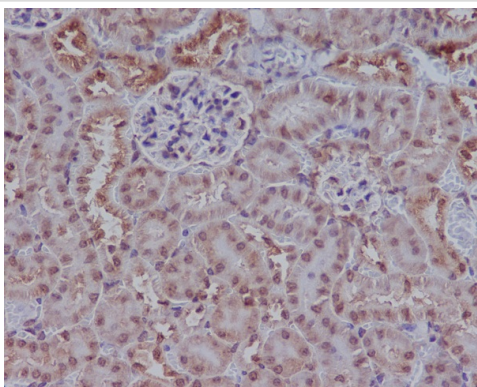
Application Details

WB 1:500~1:2000 IHC 1:50~1:200 ICC/IF 1:50~1:200 IP 1:50 FC 1:50

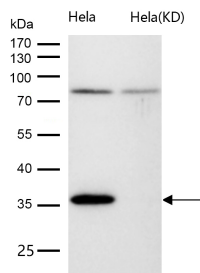
Images



Western blot analysis of Rad51 in (1)HEK293 cell lysate;
(2)K562 cell lysate.



Immunohistochemical analysis of paraffin-embedded mouse kidney, using Rad51 Antibody.



All lanes use the Antibody at 1:5K dilution for 1 hour at room temperature.

Product Description

Rad51 participates in a common DNA damage response pathway associated with the activation of homologous recombination and double-strand break repair. Binds to single and double-stranded DNA and exhibits DNA-dependent ATPase activity. Underwinds duplex DNA and forms helical nucleoprotein filaments.

Background

Rad51 participates in a common DNA damage response pathway associated with the activation of homologous recombination and double-strand break repair. Binds to single and double-stranded DNA and exhibits DNA-dependent ATPase activity. Underwinds duplex DNA and forms helical nucleoprotein filaments.

Note: This product is for in vitro research use only