

Rab4A Rabbit mAb

Catalog No: #58577

Package Size: #58577-1 50ul #58577-2 100ul

Orders: order@signalwayantibody.com

Support: tech@signalwayantibody.com

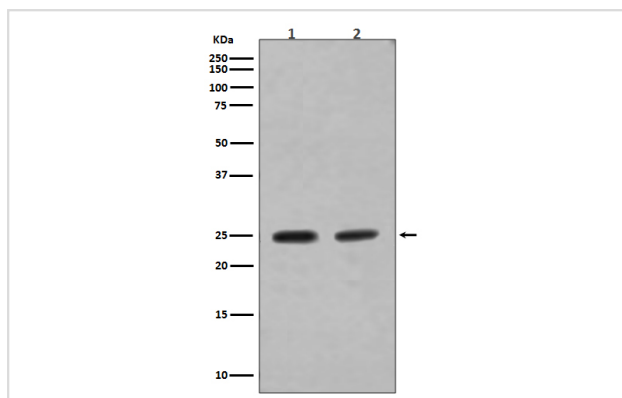
Description

Product Name	Rab4A Rabbit mAb
Host Species	Rabbit
Clonality	Monoclonal
Isotype	Rabbit IgG
Purification	Affinity-chromatography
Applications	WB ICC/IF IP
Species Reactivity	Human Mouse Rat
Specificity	Rab4A Antibody detects endogenous levels of total Rab4A
Immunogen Description	A synthesized peptide derived from human Rab4A
Other Names	Rab4; RAB4A; HRES 1; RAB4; Ras related protein Rab 4A;
Accession No.	Uniprot:P20338
Uniprot	P20338
Formulation	Rabbit IgG in phosphate buffered saline , pH 7.4, 150mM NaCl, 0.02% sodium azide and 50% glycerol.
Storage	Store at +4°C short term. Store at -20°C long term. Avoid freeze / thaw cycle.

Application Details

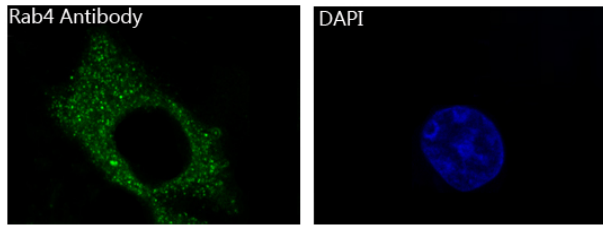
WB 1:1000~1:2000 ICC/IF 1:50~1:200 IP 1:50

Images



Western blot analysis of Rab4A expression in (1) SH-SY5Y cell lysate; (2) MCF-7 cell lysate.

Immunofluorescent analysis of HeLa cells, using Rab4A Antibody .



Product Description

The protein encoded by this gene belongs to the rab family. Rab4A protein is involved in the regulation of procathepsin L secretion, it was either inhibited by expression of a Rab4A dominant-negative mutant or increased by overexpression of the wild-type Rab4A in human melanoma cells.

Background

The protein encoded by this gene belongs to the rab family. Rab4A protein is involved in the regulation of procathepsin L secretion, it was either inhibited by expression of a Rab4A dominant-negative mutant or increased by overexpression of the wild-type Rab4A in human melanoma cells.

Note: This product is for in vitro research use only