

Smad2 Rabbit mAb

Catalog No: #58579

Package Size: #58579-1 50ul #58579-2 100ul

Orders: order@signalwayantibody.com

Support: tech@signalwayantibody.com

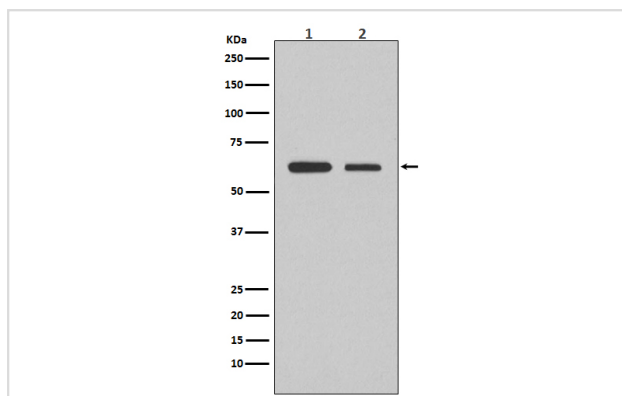
Description

Product Name	Smad2 Rabbit mAb
Host Species	Rabbit
Clonality	Monoclonal
Isotype	Rabbit IgG
Purification	Affinity-chromatography
Applications	WB ICC/IF FC
Species Reactivity	Human Mouse Rat
Specificity	Smad2 Antibody detects endogenous levels of total Smad2
Immunogen Description	A synthesized peptide derived from human Smad2
Other Names	JV18-1; MADH2; MADR2; Mad-related protein 2; Mothers against DPP homolog 2; Smad 2;
Accession No.	Uniprot:Q15796
Uniprot	Q15796
Formulation	Rabbit IgG in phosphate buffered saline , pH 7.4, 150mM NaCl, 0.02% sodium azide and 50% glycerol.
Storage	Store at +4°C short term. Store at -20°C long term. Avoid freeze / thaw cycle.

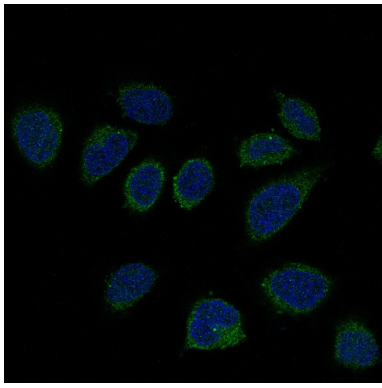
Application Details

WB 1:500~1:2000 ICC/IF 1:50~1:200 FC 1:50

Images



Western blot analysis of Smad2 expression in (1) Jurkat cell lysate;(2) RAW264.7 cell lysate.



Immunofluorescent analysis of HeLa cells, using Smad2 Antibody.

Product Description

The protein encoded by this gene belongs to the SMAD, a family of proteins similar to the gene products of the *Drosophila* gene 'mothers against decapentaplegic' (Mad) and the *C. elegans* gene Sma. SMAD proteins are signal transducers and transcriptional modulators that mediate multiple signaling pathways.

Background

The protein encoded by this gene belongs to the SMAD, a family of proteins similar to the gene products of the *Drosophila* gene 'mothers against decapentaplegic' (Mad) and the *C. elegans* gene Sma. SMAD proteins are signal transducers and transcriptional modulators that mediate multiple signaling pathways.

Note: This product is for in vitro research use only