

VEGF Rabbit mAb

Catalog No: #58580

Package Size: #58580-1 50ul #58580-2 100ul

Orders: order@signalwayantibody.comSupport: tech@signalwayantibody.com

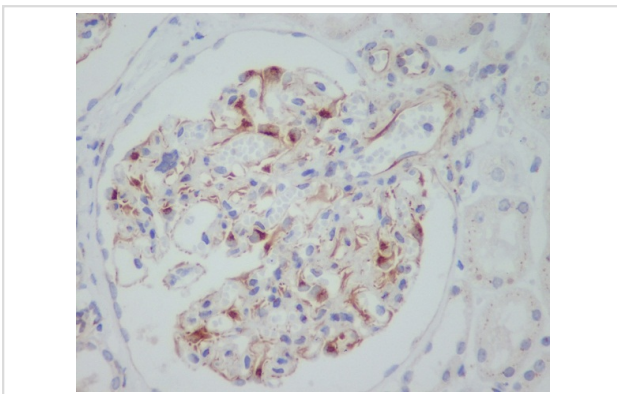
Description

Product Name	VEGF Rabbit mAb
Host Species	Rabbit
Clonality	Monoclonal
Isotype	Rabbit IgG
Purification	Affinity-chromatography
Applications	IHC ICC/IF FC
Species Reactivity	Human Mouse
Specificity	VEGF Antibody detects endogenous levels of total VEGF
Immunogen Description	A synthesized peptide derived from human VEGF
Other Names	Vascular Endothelial Growth Factor; Vascular Permeability Factor; VEGF-A; VEGFA
Accession No.	Uniprot:P15692
Uniprot	P15692
Formulation	Rabbit IgG in phosphate buffered saline , pH 7.4, 150mM NaCl, 0.02% sodium azide and 50% glycerol.
Storage	Store at +4°C short term. Store at -20°C long term. Avoid freeze / thaw cycle.

Application Details

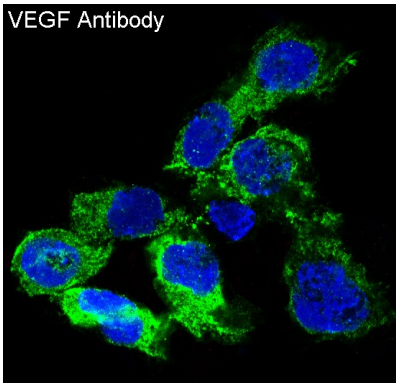
IHC 1:100~1:250 ICC/IF 1:100~1:250 FC 1:50

Images



Immunohistochemical analysis of paraffin-embedded human kidney, using VEGF Antibody.

VEGF Antibody



Immunofluorescent analysis of HUVEC cells, using VEGF Antibody.

Product Description

Growth factor active in angiogenesis, vasculogenesis and endothelial cell growth. Induces endothelial cell proliferation, promotes cell migration, inhibits apoptosis and induces permeabilization of blood vessels. Binds to the FLT1/VEGFR1 and KDR/VEGFR2 receptors, heparan sulfate and heparin.

Background

Growth factor active in angiogenesis, vasculogenesis and endothelial cell growth. Induces endothelial cell proliferation, promotes cell migration, inhibits apoptosis and induces permeabilization of blood vessels. Binds to the FLT1/VEGFR1 and KDR/VEGFR2 receptors, heparan sulfate and heparin.

Note: This product is for in vitro research use only