

## ARG1 Rabbit mAb

Catalog No: #58584

Package Size: #58584-1 50ul #58584-2 100ul

Orders: order@signalwayantibody.com

Support: tech@signalwayantibody.com

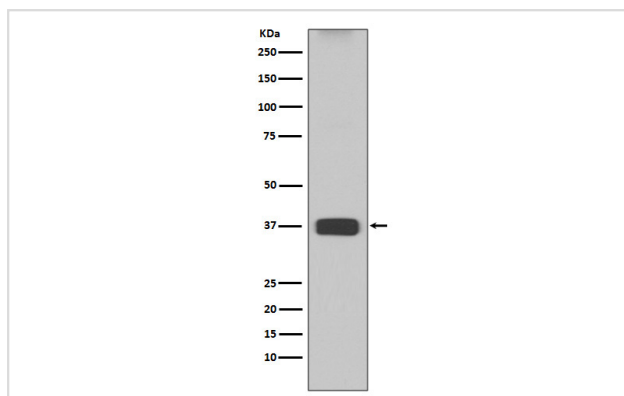
## Description

Product Name	ARG1 Rabbit mAb
Host Species	Rabbit
Clonality	Monoclonal
Isotype	Rabbit IgG
Purification	Affinity-chromatography
Applications	WB IP
Species Reactivity	Human Mouse Rat
Specificity	ARG1 Antibody detects endogenous levels of total ARG1
Immunogen Description	A synthesized peptide derived from human ARG1
Other Names	ARG1; Arginase-1; Liver-type arginase; Type I arginase; Arginase liver; Liver Arginase;
Accession No.	Uniprot:P05089
Uniprot	P05089
Formulation	Rabbit IgG in phosphate buffered saline , pH 7.4, 150mM NaCl, 0.02% sodium azide and 50% glycerol.
Storage	Store at +4°C short term. Store at -20°C long term. Avoid freeze / thaw cycle.

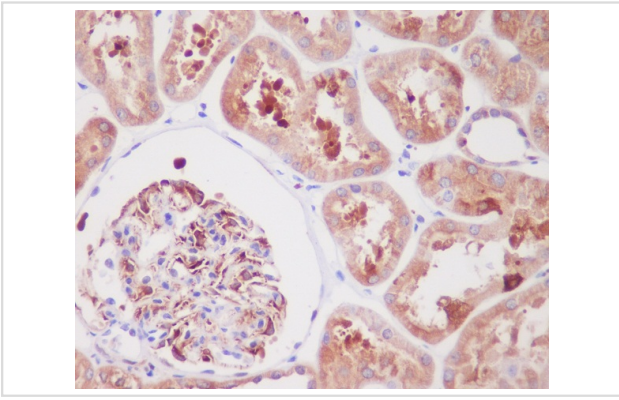
## Application Details

WB 1:500~1:2000 IP 1:50

## Images



Western blot analysis of ARG1 expression in Mouse liver lysate.



Immunohistochemical analysis of paraffin-embedded human kidney, using ARG1 Antibody.

## Product Description

Arginase catalyzes the hydrolysis of arginine to ornithine and urea. At least two isoforms of mammalian arginase exist (types I and II) which differ in their tissue distribution, subcellular localization, immunologic crossreactivity and physiologic function. The type I isoform encoded by this gene, is a cytosolic enzyme and expressed predominantly in the liver as a component of the urea cycle.

## Background

Arginase catalyzes the hydrolysis of arginine to ornithine and urea. At least two isoforms of mammalian arginase exist (types I and II) which differ in their tissue distribution, subcellular localization, immunologic crossreactivity and physiologic function. The type I isoform encoded by this gene, is a cytosolic enzyme and expressed predominantly in the liver as a component of the urea cycle.

Note: This product is for in vitro research use only