

MLH1 Rabbit mAb

Catalog No: #58588

Package Size: #58588-1 50ul #58588-2 100ul

Orders: order@signalwayantibody.com

Support: tech@signalwayantibody.com

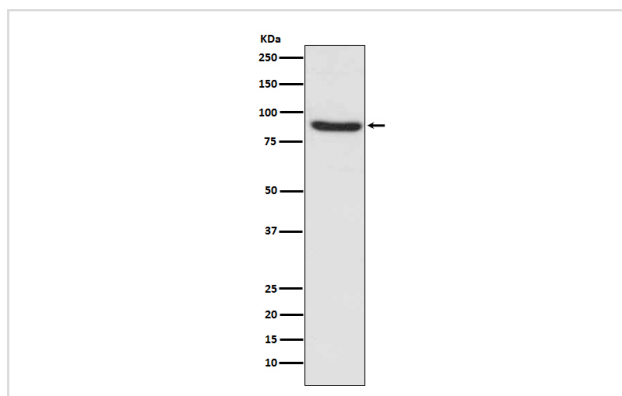
Description

Product Name	MLH1 Rabbit mAb
Host Species	Rabbit
Clonality	Monoclonal
Isotype	Rabbit IgG
Purification	Affinity-chromatography
Applications	WB IHC ICC/IF IP FC
Species Reactivity	Human Mouse Rat
Specificity	MLH1 Antibody detects endogenous levels of total MLH1
Immunogen Description	A synthesized peptide derived from human MLH1
Other Names	DNA mismatch repair protein Mlh1; MutL protein homolog 1; COCA2;
Accession No.	Uniprot:P40692
Uniprot	P40692
Formulation	Rabbit IgG in phosphate buffered saline , pH 7.4, 150mM NaCl, 0.02% sodium azide and 50% glycerol.
Storage	Store at +4°C short term. Store at -20°C long term. Avoid freeze / thaw cycle.

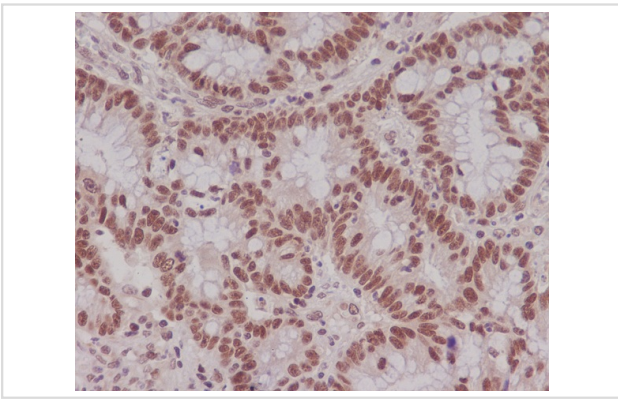
Application Details

WB 1:500~1:2000 IHC 1:50~1:200 ICC/IF 1:50~1:200 IP 1:50 FC 1:50

Images



Western blot analysis of MLH1 in 293T cell lysate.



Immunohistochemical analysis of paraffin-embedded human colon, using MLH1 Antibody.

Product Description

This gene was identified as a locus frequently mutated in hereditary nonpolyposis colon cancer (HNPCC). It is a human homolog of the *E. coli* DNA mismatch repair gene *mutL*, consistent with the characteristic alterations in microsatellite sequences (RER+ phenotype) found in HNPCC. Alternatively spliced transcript variants encoding different isoforms have been described, but their full-length natures have not been determined.

Background

This gene was identified as a locus frequently mutated in hereditary nonpolyposis colon cancer (HNPCC). It is a human homolog of the *E. coli* DNA mismatch repair gene *mutL*, consistent with the characteristic alterations in microsatellite sequences (RER+ phenotype) found in HNPCC. Alternatively spliced transcript variants encoding different isoforms have been described, but their full-length natures have not been determined.

Note: This product is for in vitro research use only