

EGFR (ErbB 1) Rabbit mAb

Catalog No: #58589



Package Size: #58589-1 50ul #58589-2 100ul

Orders: order@signalwayantibody.com
Support: tech@signalwayantibody.com

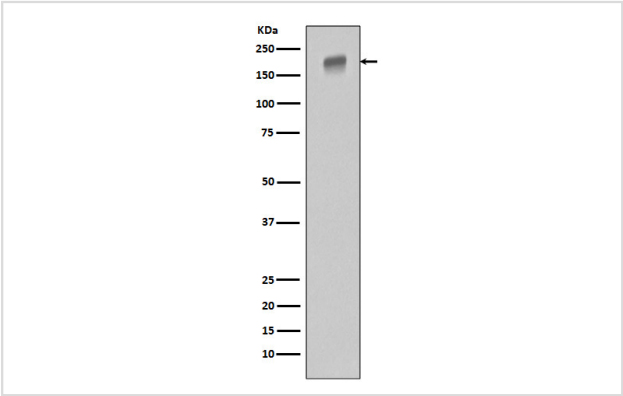
Description

Product Name	EGFR (ErbB 1) Rabbit mAb
Host Species	Rabbit
Clonality	Monoclonal
Isotype	Rabbit IgG
Purification	Affinity-chromatography
Applications	WB IHC ICC/IF IP FC
Species Reactivity	Human Mouse Rat
Specificity	EGFRoΩ½oΩ½ErbB 1oΩ½oΩ½Antibody detects endogenous levels of total EGFRoΩ½oΩ½ErbB 1oΩ½oΩ½Antibody
Immunogen Description	A synthesized peptide derived from human EGFRoΩ½oΩ½ErbB 1oΩ½oΩ½Antibody
Other Names	ERBB1; Epidermal growth factor receptor precursor; Receptor protein-tyrosine kinase ErbB-1; kinase EGFR;
Accession No.	Uniprot:P00533
Uniprot	P00533
Calculated MW	175kDa
Formulation	Rabbit IgG in phosphate buffered saline , pH 7.4, 150mM NaCl, 0.02% sodium azide and 50% glycerol.
Storage	Store at +4°C short term. Store at -20°C long term. Avoid freeze / thaw cycle.

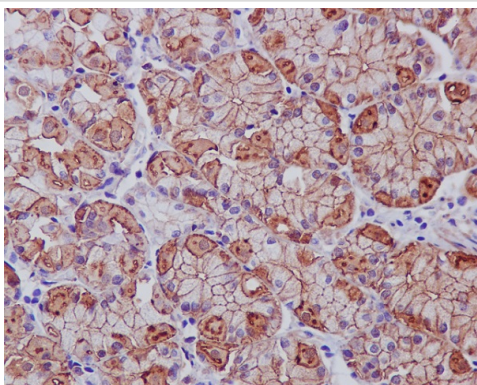
Application Details

WB 1:5000~1:10000 IHC 1:50~1:200 ICC/IF 1:50~1:200 IP 1:50 FC 1:50

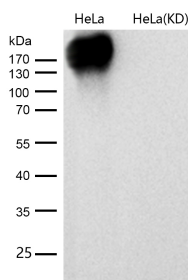
Images



Western blot analysis of EGFR in HeLa cell lysate.



Immunohistochemical analysis of paraffin-embedded human stomach cancer, using EGFR (ErbB 1) Antibody.



All lanes use the Antibody at 1:5K dilution for 1 hour at room temperature.

Product Description

EGFR is a receptor tyrosine kinase. Receptor for epidermal growth factor (EGF) and related growth factors including TGF-alpha, amphiregulin, betacellulin, heparin-binding EGF-like growth factor, GP30 and vaccinia virus growth factor. Is involved in the control of cell growth and differentiation.

Background

EGFR is a receptor tyrosine kinase. Receptor for epidermal growth factor (EGF) and related growth factors including TGF-alpha, amphiregulin, betacellulin, heparin-binding EGF-like growth factor, GP30 and vaccinia virus growth factor. Is involved in the control of cell growth and differentiation.

Note: This product is for in vitro research use only