

CDX2 Rabbit mAb

Catalog No: #58594

Package Size: #58594-1 50ul #58594-2 100ul

Orders: order@signalwayantibody.com

Support: tech@signalwayantibody.com

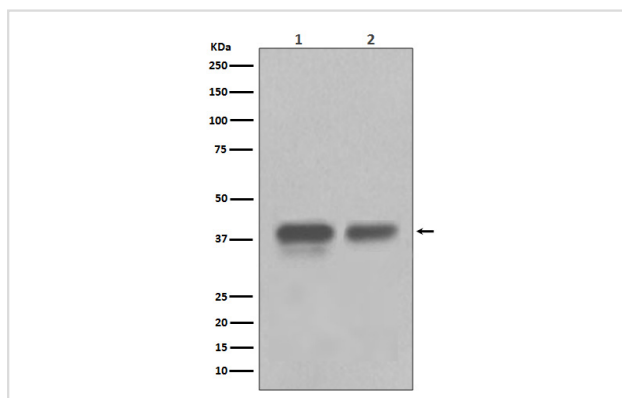
Description

Product Name	CDX2 Rabbit mAb
Host Species	Rabbit
Clonality	Monoclonal
Isotype	Rabbit IgG
Purification	Affinity-chromatography
Applications	WB IHC ICC/IF FC
Species Reactivity	Human Mouse Rat
Specificity	CDX2 Antibody detects endogenous levels of total CDX2
Immunogen Description	A synthesized peptide derived from human CDX2
Other Names	caudal type homeo box transcription factor 2; Homeobox protein CDX-2; Caudal-type homeobox protein 2; CDX3
Accession No.	Uniprot:Q99626
Uniprot	Q99626
Formulation	Rabbit IgG in phosphate buffered saline , pH 7.4, 150mM NaCl, 0.02% sodium azide and 50% glycerol.
Storage	Store at +4°C short term. Store at -20°C long term. Avoid freeze / thaw cycle.

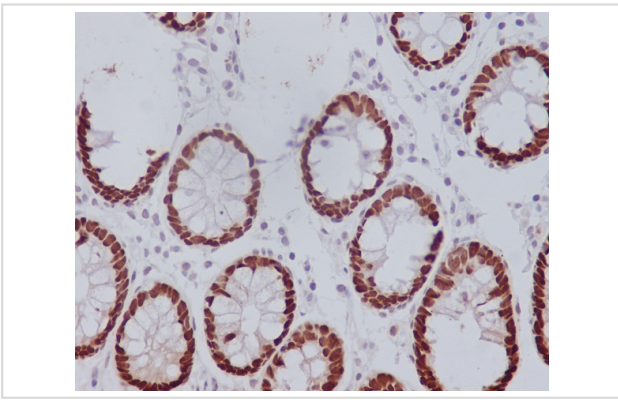
Application Details

WB 1:500~1:2000 IHC 1:50~1:200 ICC/IF 1:50~1:200 FC 1:50

Images



Western blot analysis of CDX2 in (1) HEK293 cell lysate; (2) Colon cancer lysate.



Immunohistochemical analysis of paraffin-embedded human colon, using CDX2 Antibody.

Product Description

Involved in the transcriptional regulation of multiple genes expressed in the intestinal epithelium. Important in broad range of functions from early differentiation to maintenance of the intestinal epithelial lining of both the small and large intestine.

Background

Involved in the transcriptional regulation of multiple genes expressed in the intestinal epithelium. Important in broad range of functions from early differentiation to maintenance of the intestinal epithelial lining of both the small and large intestine.

Note: This product is for in vitro research use only