

## Integrin beta 1 Rabbit mAb

Catalog No: #58599

Package Size: #58599-1 50ul #58599-2 100ul

Orders: order@signalwayantibody.com

Support: tech@signalwayantibody.com

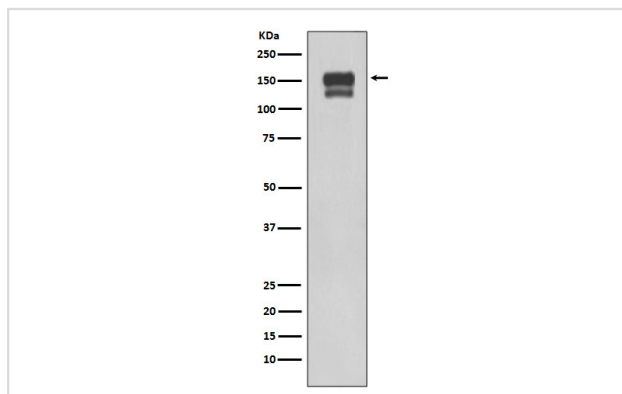
## Description

Product Name	Integrin beta 1 Rabbit mAb
Host Species	Rabbit
Clonality	Monoclonal
Isotype	Rabbit IgG
Purification	Affinity-chromatography
Applications	WB IHC ICC/IF FC
Species Reactivity	Human
Specificity	Integrin beta 1 Antibody detects endogenous levels of total Integrin beta 1
Immunogen Description	A synthesized peptide derived from human Integrin beta 1
Other Names	Integrin $\beta$ 1, CD29, FNRB, Fibronectin receptor beta subunit, ITB1, Integrin VLA-4 beta subunit, Integrin beta-1 precursor, integrin beta-1
Accession No.	Uniprot:P05556
Uniprot	P05556
Calculated MW	150kDa
Formulation	Rabbit IgG in phosphate buffered saline , pH 7.4, 150mM NaCl, 0.02% sodium azide and 50% glycerol.
Storage	Store at +4°C short term. Store at -20°C long term. Avoid freeze / thaw cycle.

## Application Details

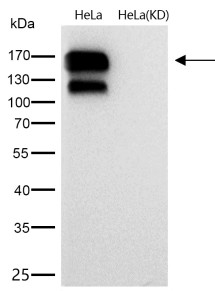
WB 1:500~1:2000 IHC 1:50~1:200 ICC/IF 1:50~1:200 FC 1:50

## Images



Western blot analysis of using Integrin beta1 expression in 293T cell lysate.

All lanes use the Antibody at 1:1K dilution for 1 hour at room temperature.



## Product Description

Integrins are  $\alpha/\beta$  heterodimeric cell surface receptors that play a pivotal role in cell adhesion and migration, as well as in growth and survival. The integrin family contains at least 18  $\alpha$  and 8  $\beta$  subunits that form 24 known integrins with distinct tissue distribution and overlapping ligand specificities.

Note: This product is for in vitro research use only