

## Vimentin Rabbit mAb

Catalog No: #58604

Package Size: #58604-1 50ul #58604-2 100ul

Orders: order@signalwayantibody.com

Support: tech@signalwayantibody.com

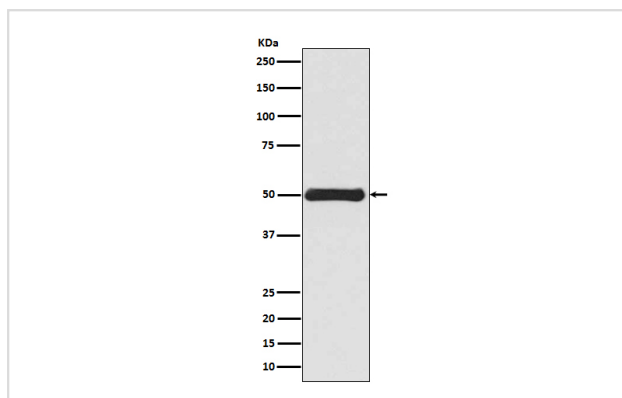
## Description

Product Name	Vimentin Rabbit mAb
Host Species	Rabbit
Clonality	Monoclonal
Isotype	Rabbit IgG
Purification	Affinity-chromatography
Applications	WB IHC ICC/IF FC
Species Reactivity	Human Mouse Rat
Specificity	Vimentin Antibody detects endogenous levels of total Vimentin
Immunogen Description	A synthesized peptide derived from human Vimentin
Other Names	FLJ36605; VIM; VIME; Vimentin
Accession No.	Uniprot:P08670
Uniprot	P08670
Formulation	Rabbit IgG in phosphate buffered saline , pH 7.4, 150mM NaCl, 0.02% sodium azide and 50% glycerol.
Storage	Store at +4°C short term. Store at -20°C long term. Avoid freeze / thaw cycle.

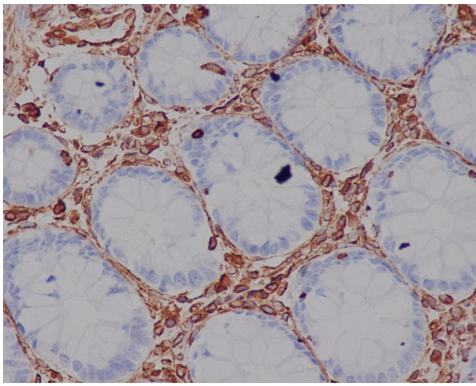
## Application Details

WB 1:500~1:2000 IHC 1:50~1:200 ICC/IF 1:50~1:200 FC 1:30

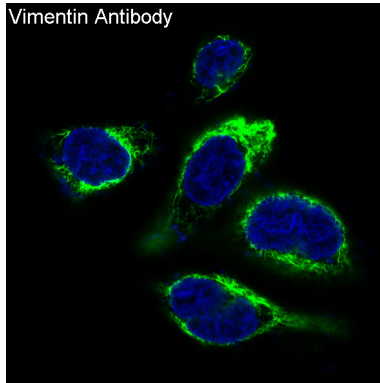
## Images



Western blot analysis of Vimentin expression in HEK293 cell lysate.



Immunohistochemical analysis of paraffin-embedded human colon, using Vimentin Antibody.



Immunofluorescent analysis of HeLa cells, using Vimentin Antibody.

## Product Description

Vimentins are class-III intermediate filaments found in various non-epithelial cells, especially mesenchymal cells. Vimentin is attached to the nucleus, endoplasmic reticulum, and mitochondria, either laterally or terminally. Involved with LARP6 in the stabilization of type I collagen mRNAs for CO1A1 and CO1A2.

## Background

Vimentins are class-III intermediate filaments found in various non-epithelial cells, especially mesenchymal cells. Vimentin is attached to the nucleus, endoplasmic reticulum, and mitochondria, either laterally or terminally. Involved with LARP6 in the stabilization of type I collagen mRNAs for CO1A1 and CO1A2.

Note: This product is for in vitro research use only