

Nrf2 Rabbit mAb

Catalog No: #58606

Package Size: #58606-1 50ul #58606-2 100ul

Orders: order@signalwayantibody.com

Support: tech@signalwayantibody.com

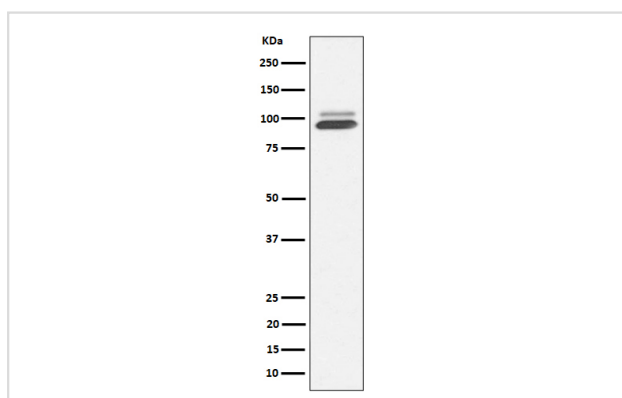
Description

Product Name	Nrf2 Rabbit mAb
Host Species	Rabbit
Clonality	Monoclonal
Isotype	Rabbit IgG
Purification	Affinity-chromatography
Applications	WB IHC ICC/IF IP CHIP
Species Reactivity	Human Mouse
Specificity	Nrf2 Antibody detects endogenous levels of total Nrf2
Immunogen Description	A synthesized peptide derived from human Nrf2
Other Names	Nuclear factor erythroid 2-related factor 2; Nuclear factor, erythroid derived 2, like 2; NFE2-related factor 2; NRF2; NF-E2-related factor 2; NFE2L2; NF2L2; HEBP1
Accession No.	Uniprot:Q16236
Uniprot	Q16236
Formulation	Rabbit IgG in phosphate buffered saline , pH 7.4, 150mM NaCl, 0.02% sodium azide and 50% glycerol.
Storage	Store at +4°C short term. Store at -20°C long term. Avoid freeze / thaw cycle.

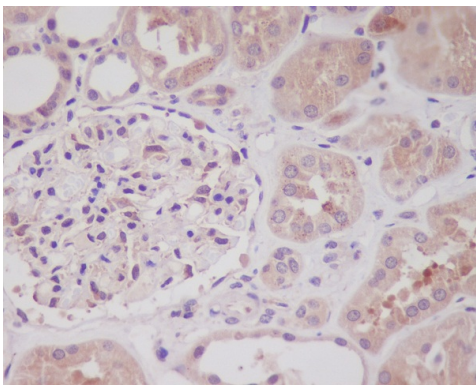
Application Details

WB 1:500~1:2000 IHC 1:50~1:200 ICC/IF 1:100~1:500 IP 1:50

Images



Western blot analysis of Nrf2 expression in 293T cell treated with arsenite.



Immunohistochemical analysis of paraffin-embedded human kidney, using Nrf2 Antibody.



Immunofluorescent analysis of HeLa cells, using Nrf2 Antibody.

Product Description

Transcription activator that binds to antioxidant response (ARE) elements in the promoter regions of target genes. Important for the coordinated up-regulation of genes in response to oxidative stress. May be involved in the transcriptional activation of genes of the beta-globin cluster by mediating enhancer activity of hypersensitive site 2 of the beta-globin locus control region.

Background

Transcription activator that binds to antioxidant response (ARE) elements in the promoter regions of target genes. Important for the coordinated up-regulation of genes in response to oxidative stress. May be involved in the transcriptional activation of genes of the beta-globin cluster by mediating enhancer activity of hypersensitive site 2 of the beta-globin locus control region.

Note: This product is for in vitro research use only