

## ALDH1A1 Rabbit mAb

Catalog No: #58609

Package Size: #58609-1 50ul #58609-2 100ul

Orders: order@signalwayantibody.com

Support: tech@signalwayantibody.com

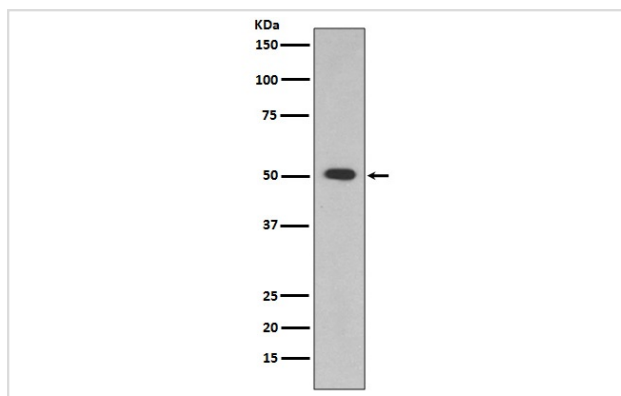
## Description

Product Name	ALDH1A1 Rabbit mAb
Host Species	Rabbit
Clonality	Monoclonal
Isotype	Rabbit IgG
Purification	Affinity-chromatography
Applications	WB IHC ICC/IF FC IP
Species Reactivity	Human Mouse Rat
Specificity	ALDH1A1 Antibody detects endogenous levels of total ALDH1A1
Immunogen Description	A synthesized peptide derived from human ALDH1A1
Other Names	ALDC; ALDH1; PUMB1; ALDH11; RALDH1; ALDH-E1; ALDH1A1;
Accession No.	Uniprot:P00352
Uniprot	P00352
Formulation	Rabbit IgG in phosphate buffered saline , pH 7.4, 150mM NaCl, 0.02% sodium azide and 50% glycerol.
Storage	Store at +4°C short term. Store at -20°C long term. Avoid freeze / thaw cycle.

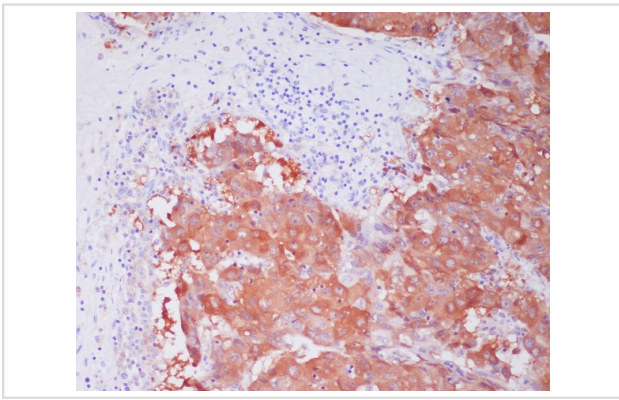
## Application Details

WB 1:500~1:2000 IHC 1:50~1:200 ICC/IF 1:50~1:200 IP 1:50 FC 1:50

## Images



Western blot analysis of ALDH1A1 expression in HepG2 cell lysate.



Immunohistochemical analysis of paraffin-embedded human liver cancer, using ALDH1A1 Antibody.

## Product Description

ALDH1A1 is a liver cytosolic isoform of acetaldehyde dehydrogenase and is involved in the major pathway of alcohol metabolism along with alcohol dehydrogenase . ALDH1A1 is also known as retinal dehydrogenase 1 and is involved in retinol metabolism, converting retinol to retinoic acid.

## Background

ALDH1A1 is a liver cytosolic isoform of acetaldehyde dehydrogenase and is involved in the major pathway of alcohol metabolism along with alcohol dehydrogenase . ALDH1A1 is also known as retinal dehydrogenase 1 and is involved in retinol metabolism, converting retinol to retinoic acid.

Note: This product is for in vitro research use only