

## Filamin A Rabbit mAb

Catalog No: #58612

Package Size: #58612-1 50ul #58612-2 100ul

Orders: order@signalwayantibody.com

Support: tech@signalwayantibody.com

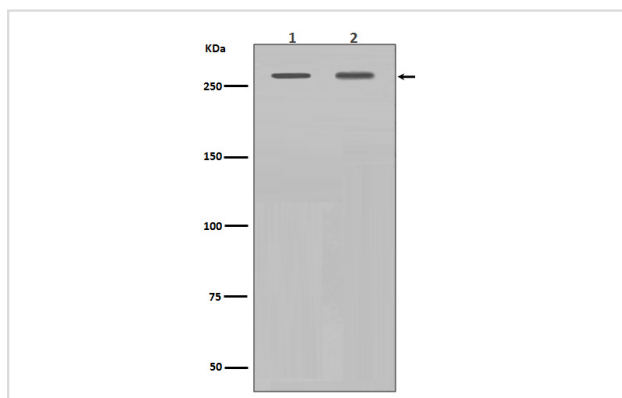
## Description

Product Name	Filamin A Rabbit mAb
Host Species	Rabbit
Clonality	Monoclonal
Isotype	Rabbit IgG
Purification	Affinity-chromatography
Applications	WB IHC ICC/IF FC
Species Reactivity	Human Mouse Rat
Specificity	Filamin A antibody detects endogenous levels of total Filamin A
Immunogen Description	A synthesized peptide derived from human Filamin A
Other Names	ABP-280; ABPX; actin binding protein 280; Alpha-filamin; filamin 1; filamin A, alpha; FLN1; FLNA; FMD; MNS; NHBP; Non-muscle filamin; OPD; OPD1;
Accession No.	Uniprot:P21333
Uniprot	P21333
Formulation	Rabbit IgG in phosphate buffered saline , pH 7.4, 150mM NaCl, 0.02% sodium azide and 50% glycerol.
Storage	Store at +4°C short term. Store at -20°C long term. Avoid freeze / thaw cycle.

## Application Details

WB 1:1000~1:2000 IHC 1:50~1:100 ICC/IF 1:50~1:100 FC 1:50

## Images



Western blot analysis of Filamin A expression in (1) NIH/3T3 cell lysate;(2) HeLa cell lysate.

## Product Description

Promotes orthogonal branching of actin filaments and links actin filaments to membrane glycoproteins. Anchors various transmembrane proteins to the actin cytoskeleton and serves as a scaffold for a wide range of cytoplasmic signaling proteins. Interaction with FLNA may allow neuroblast migration from the ventricular zone into the cortical plate.

## Background

---

Promotes orthogonal branching of actin filaments and links actin filaments to membrane glycoproteins. Anchors various transmembrane proteins to the actin cytoskeleton and serves as a scaffold for a wide range of cytoplasmic signaling proteins. Interaction with FLNA may allow neuroblast migration from the ventricular zone into the cortical plate.

---

Note: This product is for in vitro research use only