

## SHIP Rabbit mAb

Catalog No: #58613

Package Size: #58613-1 50ul #58613-2 100ul

Orders: order@signalwayantibody.com

Support: tech@signalwayantibody.com

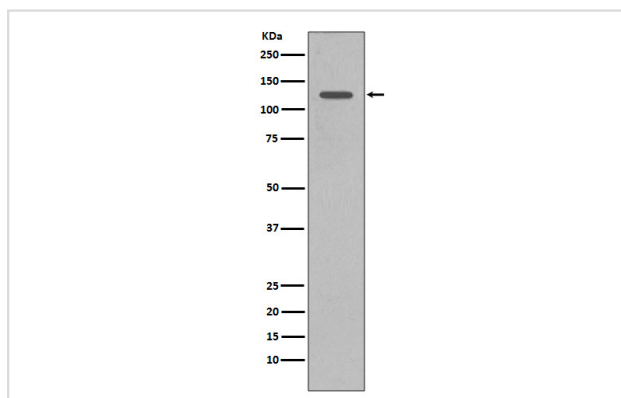
## Description

Product Name	SHIP Rabbit mAb
Host Species	Rabbit
Clonality	Monoclonal
Isotype	Rabbit IgG
Purification	Affinity-chromatography
Applications	WB IHC IP FC
Species Reactivity	Human
Specificity	SHIP Antibody detects endogenous levels of total SHIP
Immunogen Description	A synthesized peptide derived from human SHIP
Other Names	Inositol polyphosphate-5-phosphatase of 145 kDa; inositol polyphosphate-5-phosphatase, 145kDa; INPP5D; p150Ship;
Accession No.	Uniprot:Q92835
Uniprot	Q92835
Formulation	Rabbit IgG in phosphate buffered saline , pH 7.4, 150mM NaCl, 0.02% sodium azide and 50% glycerol.
Storage	Store at +4°C short term. Store at -20°C long term. Avoid freeze / thaw cycle.

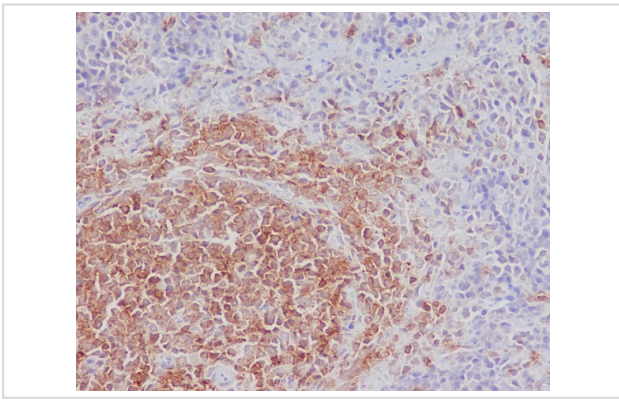
## Application Details

WB 1:500~1:2000 IHC 1:50~1:200 IP 1:50 FC 1:50

## Images



Western blot analysis of SHIP1 expression in Daudi cell lysate.



Immunohistochemical analysis of paraffin-embedded rat spleen, using SHIP Antibody.

## Product Description

SHIP an SH2-containing inositol phosphatase. A hemopoietic-specific phosphatase that regulates cell survival, growth, cell cycle arrest and apoptosis. Hydrolyzes Ins(1,3,4,5)P<sub>4</sub> and PtdIns(3,4,5)P<sub>3</sub>. A cytosolic protein with a SH2 domain in its N-terminus and two NPXY Shc binding motifs at its C-terminus.

## Background

SHIP an SH2-containing inositol phosphatase. A hemopoietic-specific phosphatase that regulates cell survival, growth, cell cycle arrest and apoptosis. Hydrolyzes Ins(1,3,4,5)P<sub>4</sub> and PtdIns(3,4,5)P<sub>3</sub>. A cytosolic protein with a SH2 domain in its N-terminus and two NPXY Shc binding motifs at its C-terminus.

Note: This product is for in vitro research use only