

Actin (Alpha-Actin) Rabbit mAb

Catalog No: #58619

Package Size: #58619-1 50ul #58619-2 100ul

Orders: order@signalwayantibody.com

Support: tech@signalwayantibody.com

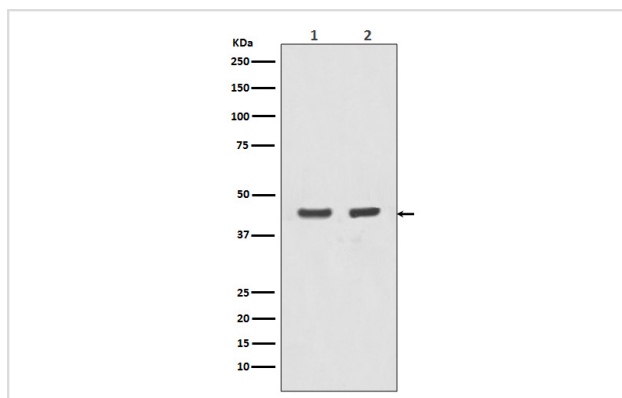
Description

Product Name	Actin (Alpha-Actin) Rabbit mAb
Host Species	Rabbit
Clonality	Monoclonal
Isotype	Rabbit IgG
Purification	Affinity-chromatography
Applications	WB IHC ICC/IF IP FC
Species Reactivity	Human Mouse Rat
Specificity	Actin (Alpha-Actin) Antibody detects endogenous levels of total Actin (Alpha-Actin)
Immunogen Description	A synthesized peptide derived from human Actin (Alpha-Actin)
Other Names	ACTA, ACTA1, ACTS, Actin, alpha skeletal muscle, Alpha-actin 1
Accession No.	Uniprot:P68133
Uniprot	P68133
Formulation	Rabbit IgG in phosphate buffered saline , pH 7.4, 150mM NaCl, 0.02% sodium azide and 50% glycerol.
Storage	Store at +4°C short term. Store at -20°C long term. Avoid freeze / thaw cycle.

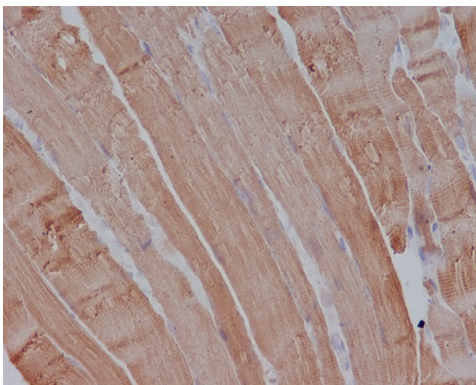
Application Details

WB 1:1000~1:2000 IHC 1:50~1:200 ICC/IF 1:50~1:200 IP 1:50 FC 1:50

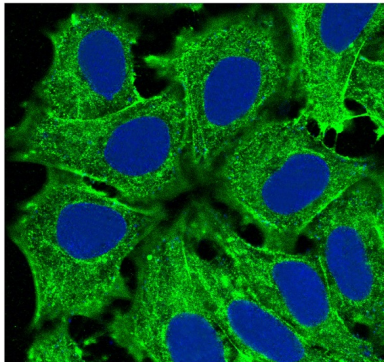
Images



Western blot analysis of Actin (Alpha-Actin) expression in (1) A431 cell lysate; (2) MCF-7 cell lysate.



Immunohistochemical analysis of paraffin-embedded mouse muscle, using Actin (Alpha-Actin) Antibody.



Immunofluorescent analysis of HeLa cells, using Actin (Alpha-Actin) Antibody .

Product Description

Actins are highly conserved proteins that are involved in various types of cell motility and are ubiquitously expressed in all eukaryotic cells.

Background

Actins are highly conserved proteins that are involved in various types of cell motility and are ubiquitously expressed in all eukaryotic cells.

Note: This product is for in vitro research use only