

Vinculin Rabbit mAb

Catalog No: #58623

Package Size: #58623-1 50ul #58623-2 100ul

Orders: order@signalwayantibody.com

Support: tech@signalwayantibody.com

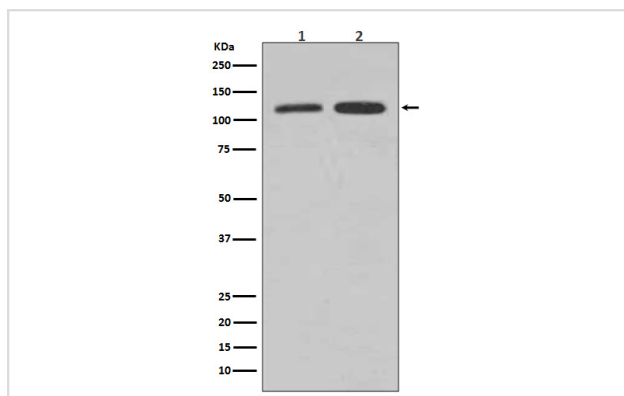
Description

Product Name	Vinculin Rabbit mAb
Host Species	Rabbit
Clonality	Monoclonal
Isotype	Rabbit IgG
Purification	Affinity-chromatography
Applications	WB ICC/IF IP
Species Reactivity	Human Mouse Rat
Specificity	Vinculin Antibody detects endogenous levels of total Vinculin
Immunogen Description	A synthesized peptide derived from human Vinculin
Other Names	Vinculin;VCL;Metavinculin; MV;
Accession No.	Uniprot:P18206
Uniprot	P18206
Formulation	Rabbit IgG in phosphate buffered saline , pH 7.4, 150mM NaCl, 0.02% sodium azide and 50% glycerol.
Storage	Store at +4°C short term. Store at -20°C long term. Avoid freeze / thaw cycle.

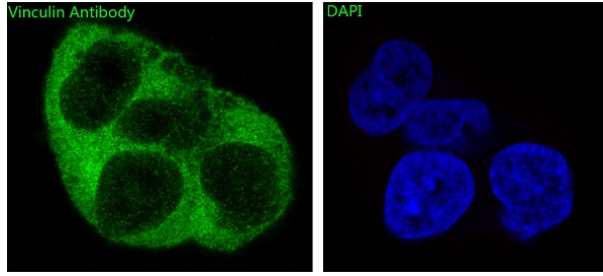
Application Details

WB 1:10000~1:20000 ICC/IF 1:50~1:200 IP 1:50

Images



Western blot analysis of Vinculin expression in (1) HepG2 cell lysate; (2) HeLa cell lysate.



Immunofluorescent analysis of A673 cells, using Vinculin Antibody .

Product Description

Vinculin is a cytoskeletal protein that plays an important role in the regulation of focal adhesions and embryonic development. Three structural vinculin domains include an amino-terminal head, a short, flexible proline-rich region and a carboxy-terminal tail. In the inactive state, the head and tail domains of vinculin interact to form a closed confirmation. The open and active form of vinculin translocates to focal adhesions where it is thought to be involved in anchoring F-actin to the membrane and regulation of cell migration.

Background

Vinculin is a cytoskeletal protein that plays an important role in the regulation of focal adhesions and embryonic development. Three structural vinculin domains include an amino-terminal head, a short, flexible proline-rich region and a carboxy-terminal tail. In the inactive state, the head and tail domains of vinculin interact to form a closed confirmation. The open and active form of vinculin translocates to focal adhesions where it is thought to be involved in anchoring F-actin to the membrane and regulation of cell migration.

Note: This product is for in vitro research use only