

STAT3 Rabbit mAb

Catalog No: #58624

Package Size: #58624-1 50ul #58624-2 100ul

Orders: order@signalwayantibody.com

Support: tech@signalwayantibody.com

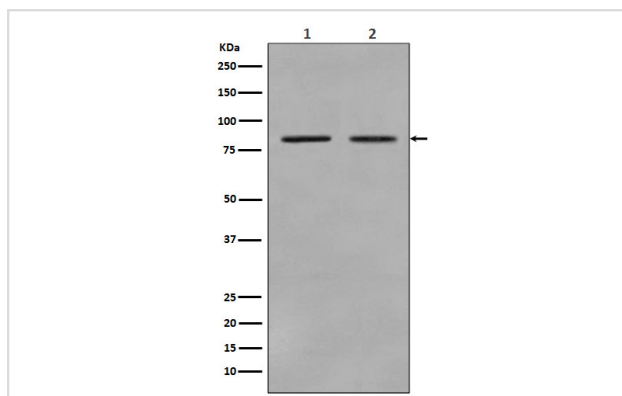
Description

Product Name	STAT3 Rabbit mAb
Host Species	Rabbit
Clonality	Monoclonal
Isotype	Rabbit IgG
Purification	Affinity-chromatography
Applications	WB IHC ICC/IF FC
Species Reactivity	Human Mouse Rat
Specificity	STAT3 Antibody detects endogenous levels of total STAT3
Immunogen Description	A synthesized peptide derived from human STAT3
Other Names	APRF, Acute-phase response factor, Signal transducer and activator of transcription 3
Accession No.	Uniprot:P40763
Uniprot	P40763
Formulation	Rabbit IgG in phosphate buffered saline , pH 7.4, 150mM NaCl, 0.02% sodium azide and 50% glycerol.
Storage	Store at +4°C short term. Store at -20°C long term. Avoid freeze / thaw cycle.

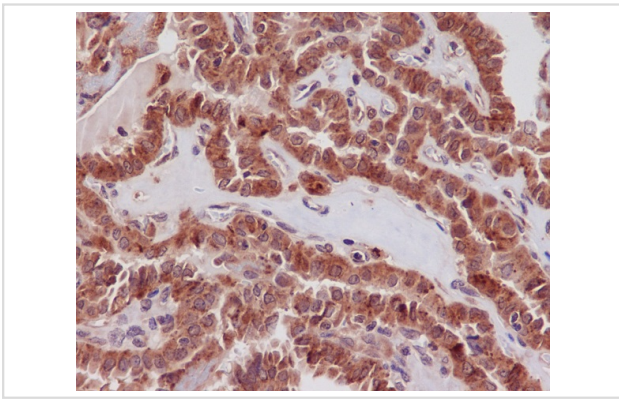
Application Details

WB 1:500~1:2000 IHC 1:50~1:200 ICC/IF 1:100~1:500 FC 1:200~1:500

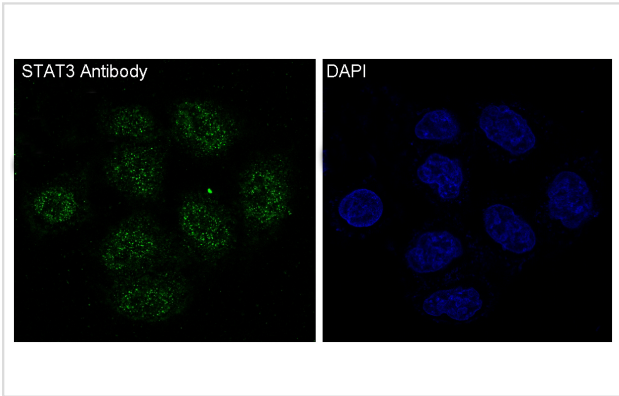
Images



Western blot analysis of STAT3 expression in (1) A431 cell lysate; (2) Raji cell lysate.



Immunohistochemical analysis of paraffin-embedded human thyroid carcinoma, using STAT3 Antibody.



Immunofluorescent analysis of HeLa cells, using STAT3 Antibody.

Product Description

The protein encoded by this gene is a member of the STAT protein family. In response to cytokines and growth factors, STAT family members are phosphorylated by the receptor associated kinases, and then form homo- or heterodimers that translocate to the cell nucleus where they act as transcription activators. This protein is activated through phosphorylation in response to various cytokines and growth factors including IFNs, EGF, IL5, IL6, HGF, LIF and BMP2.

Background

The protein encoded by this gene is a member of the STAT protein family. In response to cytokines and growth factors, STAT family members are phosphorylated by the receptor associated kinases, and then form homo- or heterodimers that translocate to the cell nucleus where they act as transcription activators. This protein is activated through phosphorylation in response to various cytokines and growth factors including IFNs, EGF, IL5, IL6, HGF, LIF and BMP2.

Note: This product is for in vitro research use only