

MMP3 Rabbit mAb

Catalog No: #58636

Package Size: #58636-1 50ul #58636-2 100ul

Orders: order@signalwayantibody.comSupport: tech@signalwayantibody.com

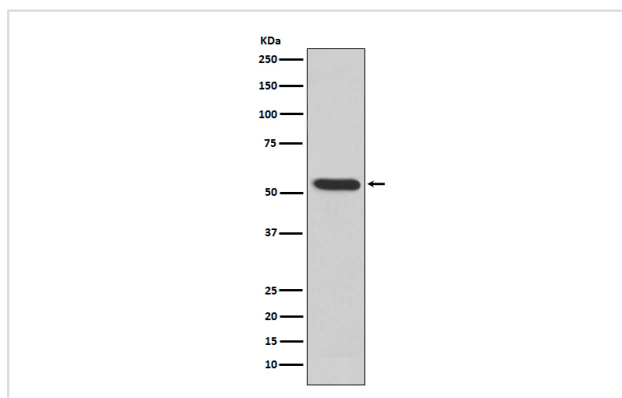
Description

Product Name	MMP3 Rabbit mAb
Host Species	Rabbit
Clonality	Monoclonal
Isotype	Rabbit IgG
Purification	Affinity-chromatography
Applications	WB IHC ICC/IF
Species Reactivity	Human Mouse Rat
Specificity	MMP3 Antibody detects endogenous levels of total MMP3
Immunogen Description	A synthesized peptide derived from human MMP3
Other Names	CHDS6; Matrix metalloproteinase-3 MMP3; MMP3; proteoglycanase; SL-1; STMY; STMY1; STR1; Stromelysin-1;
Accession No.	Uniprot:P08254
Uniprot	P08254
Formulation	Rabbit IgG in phosphate buffered saline , pH 7.4, 150mM NaCl, 0.02% sodium azide and 50% glycerol.
Storage	Store at +4°C short term. Store at -20°C long term. Avoid freeze / thaw cycle.

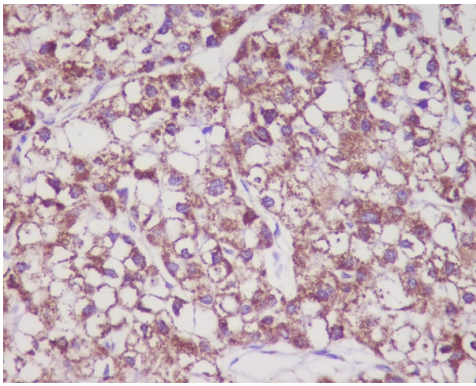
Application Details

WB 1:500~1:2000 IHC 1:50~1:200 ICC/IF 1:50~1:200

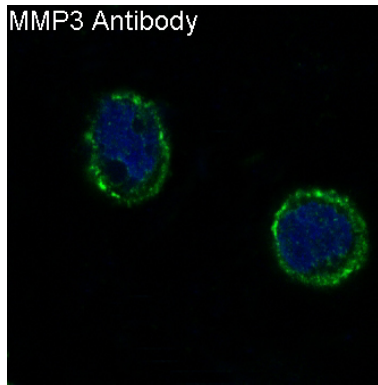
Images



Western blot analysis of MMP3 expression in MMP3 recombinant protein.



Immunohistochemical analysis of paraffin-embedded human liver cancer, using MMP3 Antibody.



Immunofluorescent analysis of HeLa cells, using MMP3 Antibody.

Product Description

MMP3 Can degrade fibronectin, laminin, gelatins of type I, III, IV, and V; collagens III, IV, X, and IX, and cartilage proteoglycans. Activates procollagenase. Belongs to the peptidase M10A family.

Background

MMP3 Can degrade fibronectin, laminin, gelatins of type I, III, IV, and V; collagens III, IV, X, and IX, and cartilage proteoglycans. Activates procollagenase. Belongs to the peptidase M10A family.

Note: This product is for in vitro research use only