

MMP9 Rabbit mAb

Catalog No: #58645

Package Size: #58645-1 50ul #58645-2 100ul

Orders: order@signalwayantibody.com

Support: tech@signalwayantibody.com

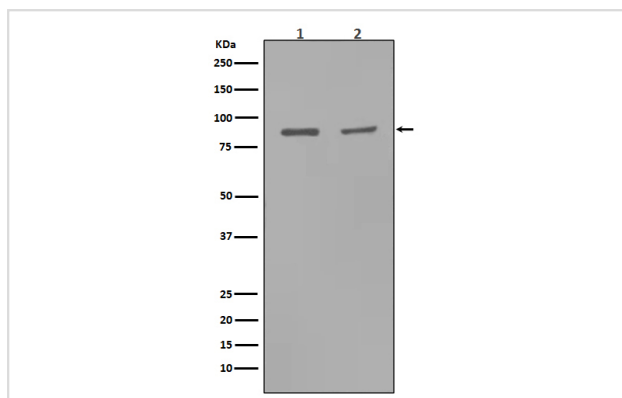
Description

Product Name	MMP9 Rabbit mAb
Host Species	Rabbit
Clonality	Monoclonal
Isotype	Rabbit IgG
Purification	Affinity-chromatography
Applications	WB IHC ICC/IF FC
Species Reactivity	Human Rat
Specificity	MMP9 Antibody detects endogenous levels of total MMP9
Immunogen Description	A synthesized peptide derived from human MMP9
Other Names	MMP9; GELB; CLG4B; Matrix Metalloproteinase 9; MANDP2; Gelatinase beta;
Accession No.	Uniprot:P14780
Uniprot	P14780
Formulation	Rabbit IgG in phosphate buffered saline , pH 7.4, 150mM NaCl, 0.02% sodium azide and 50% glycerol.
Storage	Store at +4°C short term. Store at -20°C long term. Avoid freeze / thaw cycle.

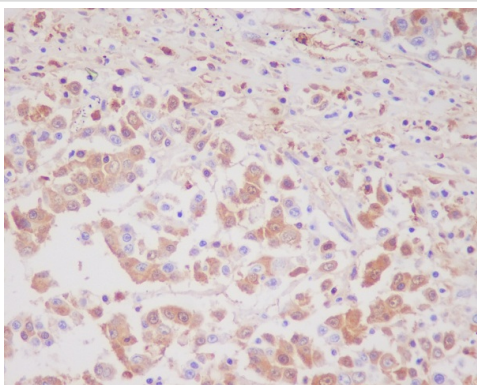
Application Details

WB 1:500~1:2000 IHC 1:50~1:200 ICC/IF 1:50~1:200 FC 1:50

Images

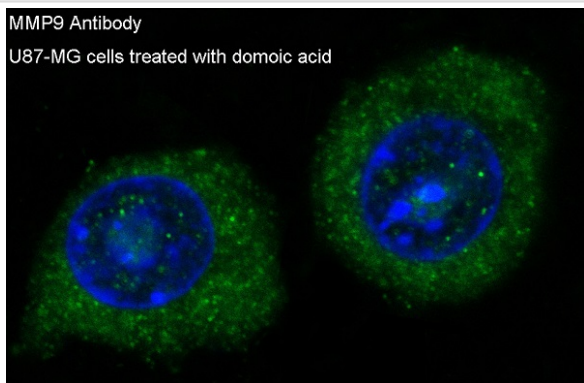


Western blot analysis of MMP9 expression in (1)Rat kidney tissue lysate;(2)Rat lung tissue lysate.



Immunohistochemical analysis of paraffin-embedded human colon cancer, using MMP9 Antibody.

MMP9 Antibody
U87-MG cells treated with domoic acid



Immunofluorescent analysis of U87-MG cells, using MMP9 Antibody.

Product Description

MMP9 May play an essential role in local proteolysis of the extracellular matrix and in leukocyte migration. Could play a role in bone osteoclastic resorption. Cleaves KiSS1 at a Gly-|-Leu bond. Cleaves type IV and type V collagen into large C-terminal three quarter fragments and shorter N-terminal one quarter fragments. Degrades fibronectin but not laminin or Pz-peptide. Belongs to the peptidase M10A family.

Background

MMP9 May play an essential role in local proteolysis of the extracellular matrix and in leukocyte migration. Could play a role in bone osteoclastic resorption. Cleaves KiSS1 at a Gly-|-Leu bond. Cleaves type IV and type V collagen into large C-terminal three quarter fragments and shorter N-terminal one quarter fragments. Degrades fibronectin but not laminin or Pz-peptide. Belongs to the peptidase M10A family.

Note: This product is for in vitro research use only