

## CD11c Rabbit mAb

Catalog No: #58646

Package Size: #58646-1 50ul #58646-2 100ul

Orders: order@signalwayantibody.com

Support: tech@signalwayantibody.com

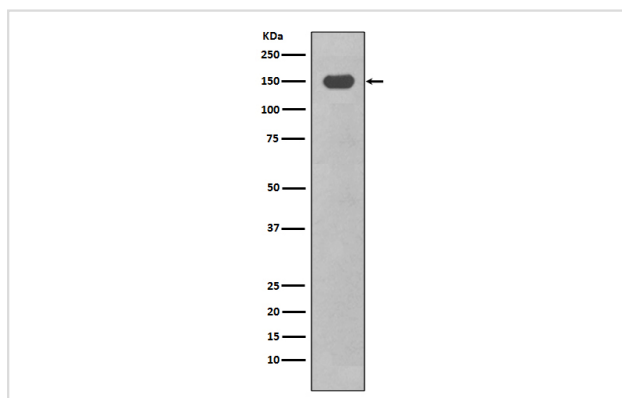
## Description

Product Name	CD11c Rabbit mAb
Host Species	Rabbit
Clonality	Monoclonal
Isotype	Rabbit IgG
Purification	Affinity-chromatography
Applications	WB IHC ICC/IF IP
Species Reactivity	Human
Specificity	CD11c Antibody detects endogenous levels of total CD11c
Immunogen Description	A synthesized peptide derived from human CD11c
Other Names	p150/95 integrin alpha chain; Leu M5; SLEB6; ITGAX; CD11c; p150; Myeloid membrane antigen alpha subunit; Leukocyte surface antigen p150 95 alpha subunit; Integrin alpha-X;
Accession No.	Uniprot:P20702
Uniprot	P20702
Formulation	Rabbit IgG in phosphate buffered saline , pH 7.4, 150mM NaCl, 0.02% sodium azide and 50% glycerol.
Storage	Store at +4°C short term. Store at -20°C long term. Avoid freeze / thaw cycle.

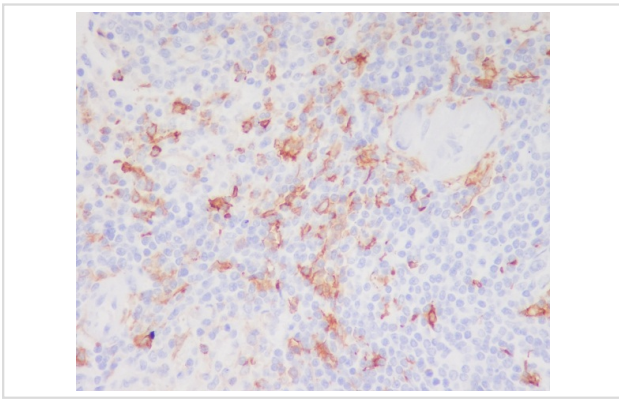
## Application Details

WB 1:500~1:2000 IHC 1:50~1:200 ICC/IF 1:50~1:200 IP 1:50

## Images



Western blot analysis of CD11c expression in THP-1 cell lysate treated with TPA.



Immunohistochemical analysis of paraffin-embedded human spleen, using CD11c Antibody.

## Product Description

Integrin alpha-X/beta-2 is a receptor for fibrinogen. It recognizes the sequence G-P-R in fibrinogen. It mediates cell-cell interaction during inflammatory responses. It is especially important in monocyte adhesion and chemotaxis.

## Background

Integrin alpha-X/beta-2 is a receptor for fibrinogen. It recognizes the sequence G-P-R in fibrinogen. It mediates cell-cell interaction during inflammatory responses. It is especially important in monocyte adhesion and chemotaxis.

Note: This product is for in vitro research use only