

ATM Rabbit mAb

Catalog No: #58647

Package Size: #58647-1 50ul #58647-2 100ul

Orders: order@signalwayantibody.com

Support: tech@signalwayantibody.com

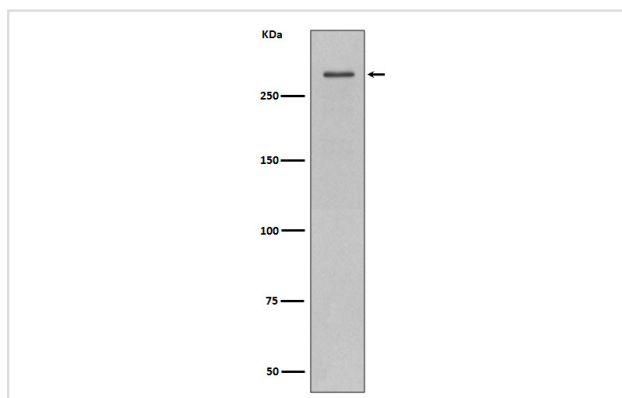
Description

Product Name	ATM Rabbit mAb
Host Species	Rabbit
Clonality	Monoclonal
Isotype	Rabbit IgG
Purification	Affinity-chromatography
Applications	WB IHC ICC/IF FC
Species Reactivity	Human
Specificity	ATM Antibody detects endogenous levels of total ATM
Immunogen Description	A synthesized peptide derived from human ATM
Other Names	A-T, mutated; Ataxia telangiectasia mutated; Ataxia telangiectasia mutated homolog; EC 2.7.11.1; kinase ATM; Serine-protein kinase ATM
Accession No.	Uniprot:Q13315
Uniprot	Q13315
Formulation	Rabbit IgG in phosphate buffered saline , pH 7.4, 150mM NaCl, 0.02% sodium azide and 50% glycerol.
Storage	Store at +4°C short term. Store at -20°C long term. Avoid freeze / thaw cycle.

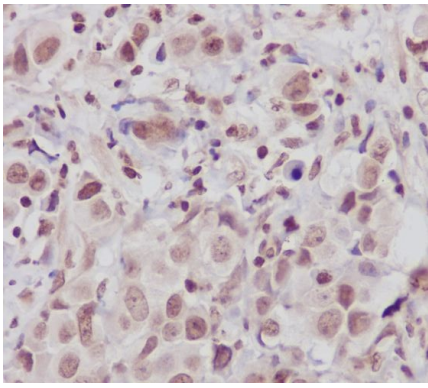
Application Details

WB 1:500~1:2000 IHC 1:50~1:100 ICC/IF 1:50~1:200 FC 1:50

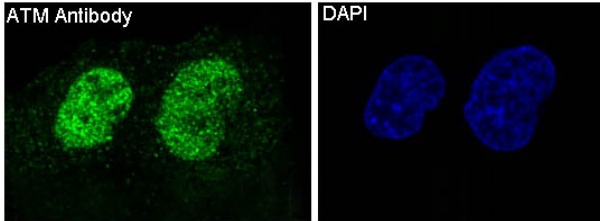
Images



Western blot analysis of ATM expression in HeLa cell lysate.



Immunohistochemical analysis of paraffin-embedded human breast cancer, using ATM Antibody.



Immunofluorescent analysis of HeLa cells, using ATM Antibody.

Product Description

ATM encoded by this gene belongs to the PI3/PI4-kinase family. This protein is an important cell cycle checkpoint kinase that phosphorylates; thus, it functions as a regulator of a wide variety of downstream proteins, including tumor suppressor proteins p53 and BRCA1, checkpoint kinase CHK2, checkpoint proteins RAD17 and RAD9, and DNA repair protein NBS1.

Background

ATM encoded by this gene belongs to the PI3/PI4-kinase family. This protein is an important cell cycle checkpoint kinase that phosphorylates; thus, it functions as a regulator of a wide variety of downstream proteins, including tumor suppressor proteins p53 and BRCA1, checkpoint kinase CHK2, checkpoint proteins RAD17 and RAD9, and DNA repair protein NBS1.

Note: This product is for in vitro research use only