

## Pax2 Rabbit mAb

Catalog No: #58650

Package Size: #58650-1 50ul #58650-2 100ul

Orders: order@signalwayantibody.com

Support: tech@signalwayantibody.com

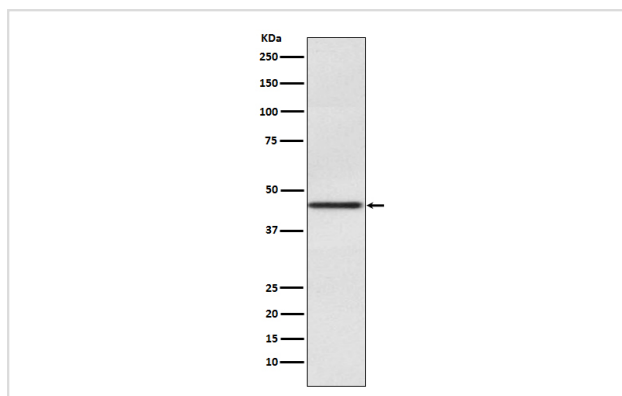
## Description

Product Name	Pax2 Rabbit mAb
Host Species	Rabbit
Clonality	Monoclonal
Isotype	Rabbit IgG
Purification	Affinity-chromatography
Applications	WB IHC FC
Species Reactivity	Human Mouse
Specificity	Pax2 Antibody detects endogenous levels of total Pax2
Immunogen Description	A synthesized peptide derived from human Pax2
Other Names	PAX2; Paired box protein Pax-2
Accession No.	Uniprot:Q02962
Uniprot	Q02962
Formulation	Rabbit IgG in phosphate buffered saline , pH 7.4, 150mM NaCl, 0.02% sodium azide and 50% glycerol.
Storage	Store at +4°C short term. Store at -20°C long term. Avoid freeze / thaw cycle.

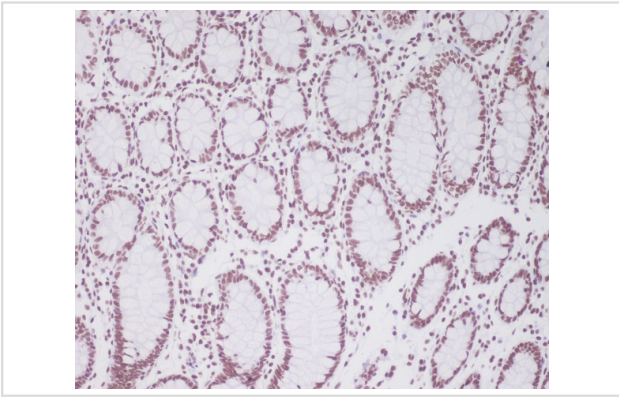
## Application Details

WB 1:500~1:2000 IHC 1:50~1:200 FC 1:50

## Images



Western blot analysis of Pax2 expression in Human fetal kidney lysate.



Immunohistochemical analysis of paraffin-embedded human colon using Pax2 Antibody.

## Product Description

PAX2 mutations can be responsible for renal hypoplasia, either isolated or associated with various ophthalmologic manifestations ranging from retinal coloboma to microphthalmia. Lesions in the PAX6 gene accounts for most cases of aniridia, a congenital malformation of the eye, chiefly characterized by iris hypoplasia, which can cause blindness.

## Background

PAX2 mutations can be responsible for renal hypoplasia, either isolated or associated with various ophthalmologic manifestations ranging from retinal coloboma to microphthalmia. Lesions in the PAX6 gene accounts for most cases of aniridia, a congenital malformation of the eye, chiefly characterized by iris hypoplasia, which can cause blindness.

Note: This product is for in vitro research use only