

Desmin Rabbit mAb

Catalog No: #58654

Package Size: #58654-1 50ul #58654-2 100ul

Orders: order@signalwayantibody.com

Support: tech@signalwayantibody.com

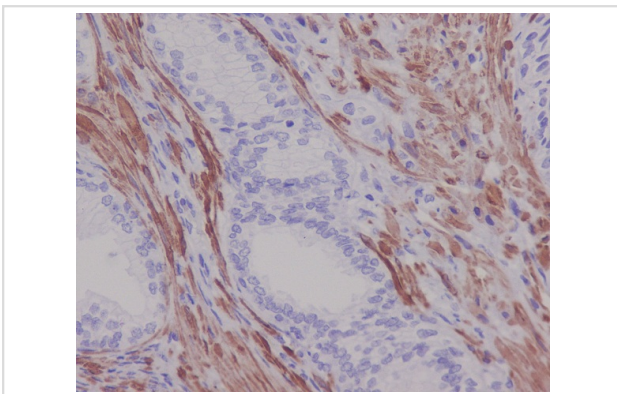
Description

Product Name	Desmin Rabbit mAb
Host Species	Rabbit
Clonality	Monoclonal
Isotype	Rabbit IgG
Purification	Affinity-chromatography
Applications	WB IHC ICC/IF
Species Reactivity	Human Mouse Rat
Specificity	Desmin Antibody detects endogenous levels of total Desmin
Immunogen Description	A synthesized peptide derived from human Desmin
Other Names	CMD1I; CSM1; CSM2; DES; DESM; Desmin; intermediate filament protein
Accession No.	Uniprot:P17661
Uniprot	P17661
Formulation	Rabbit IgG in phosphate buffered saline , pH 7.4, 150mM NaCl, 0.02% sodium azide and 50% glycerol.
Storage	Store at +4°C short term. Store at -20°C long term. Avoid freeze / thaw cycle.

Application Details

WB: 1:10000~1:20000 IHC: 1:100~1:500 ICC/IF: 1:50~1:100

Images



Immunohistochemical analysis of paraffin-embedded human prostate, using Desmin Antibody.

Product Description

Desmin a class-III intermediate filaments found in muscle cells. In adult striated muscle they form a fibrous network connecting myofibrils to each other and to the plasma membrane from the periphery of the Z-line structures. Mutations in this gene are associated with desmin-related myopathy, a familial cardiac and skeletal myopathy (CSM), and with distal myopathies.

Background

Desmin a class-III intermediate filaments found in muscle cells. In adult striated muscle they form a fibrous network connecting myofibrils to each other and to the plasma membrane from the periphery of the Z-line structures. Mutations in this gene are associated with desmin-related myopathy, a familial cardiac and skeletal myopathy (CSM), and with distal myopathies.

Note: This product is for in vitro research use only