

CD8 alpha Rabbit mAb

Catalog No: #58655

Package Size: #58655-1 50ul #58655-2 100ul

Orders: order@signalwayantibody.comSupport: tech@signalwayantibody.com

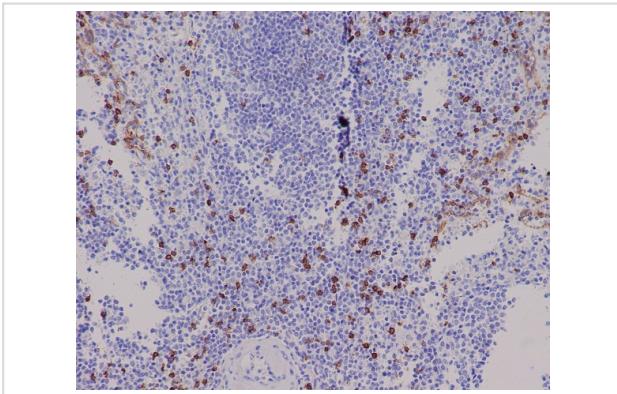
Description

Product Name	CD8 alpha Rabbit mAb
Host Species	Rabbit
Clonality	Monoclonal
Isotype	Rabbit IgG
Purification	Affinity-chromatography
Applications	IHC
Species Reactivity	Human
Specificity	CD8 alpha Antibody detects endogenous levels of total CD8 alpha
Immunogen Description	A synthesized peptide derived from human CD8 alpha
Other Names	T-cell surface glycoprotein CD8 alpha chain; T-lymphocyte differentiation antigen T8/Leu-2; CD8a; CD8A; MAL
Accession No.	Uniprot:P01732
Uniprot	P01732
Formulation	Rabbit IgG in phosphate buffered saline , pH 7.4, 150mM NaCl, 0.02% sodium azide and 50% glycerol.
Storage	Store at +4°C short term. Store at -20°C long term. Avoid freeze / thaw cycle.

Application Details

IHC 1:50~1:200

Images



Immunohistochemical analysis of paraffin-embedded human spleen, using CD8 alpha Antibody.

Product Description

Identifies cytotoxic/suppressor T-cells that interact with MHC class I bearing targets. CD8 is thought to play a role in the process of T-cell mediated killing. CD8 alpha chains binds to class I MHC molecules alpha-3 domains.

Background

Identifies cytotoxic/suppressor T-cells that interact with MHC class I bearing targets. CD8 is thought to play a role in the process of T-cell mediated killing. CD8 alpha chains binds to class I MHC molecules alpha-3 domains.

Note: This product is for in vitro research use only