

## Otx1 Rabbit mAb

Catalog No: #58656

Package Size: #58656-1 50ul #58656-2 100ul

Orders: order@signalwayantibody.com

Support: tech@signalwayantibody.com

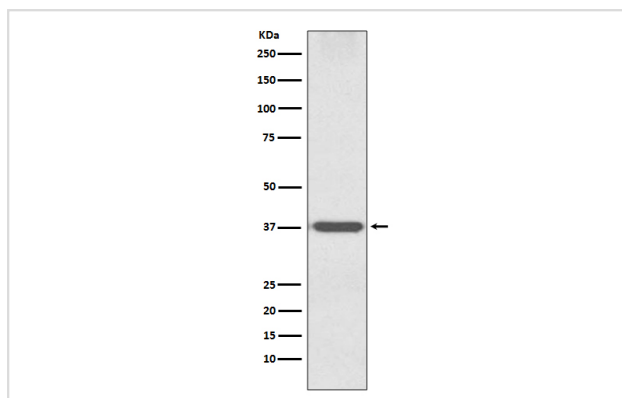
## Description

Product Name	Otx1 Rabbit mAb
Host Species	Rabbit
Clonality	Monoclonal
Isotype	Rabbit IgG
Purification	Affinity-chromatography
Applications	WB
Species Reactivity	Human Mouse Rat
Specificity	Otx1 Antibody detects endogenous levels of total Otx1
Immunogen Description	A synthesized peptide derived from human Otx1
Other Names	Homeobox protein OTX1; OTX1; Otx-1; Orthodenticle homolog 1;
Accession No.	Uniprot:P32242
Uniprot	P32242
Formulation	Rabbit IgG in phosphate buffered saline , pH 7.4, 150mM NaCl, 0.02% sodium azide and 50% glycerol.
Storage	Store at +4°C short term. Store at -20°C long term. Avoid freeze / thaw cycle.

## Application Details

WB 1:1000~1:2000

## Images



Western blot analysis of Otx1 expression in Mouse brain tissue lysate.

## Product Description

Probably plays a role in the development of the brain and the sense organs. Can bind to the BCD target sequence (BTS): 5'-TCTAATCCC-3'.

## Background

Probably plays a role in the development of the brain and the sense organs. Can bind to the BCD target sequence (BTS): 5'-TCTAATCCC-3'.

---

Note: This product is for in vitro research use only