

STAT1 Rabbit mAb

Catalog No: #58661

Package Size: #58661-1 50ul #58661-2 100ul

Orders: order@signalwayantibody.com

Support: tech@signalwayantibody.com

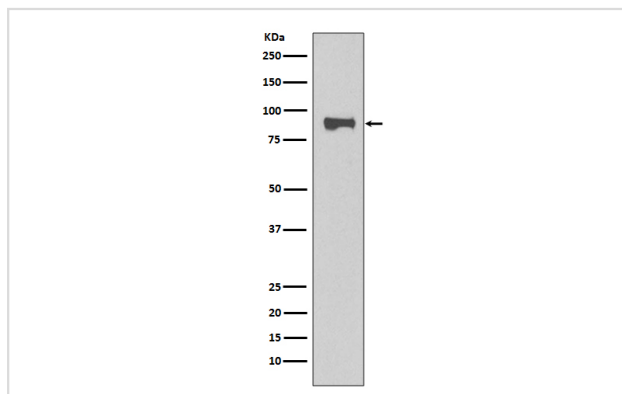
Description

Product Name	STAT1 Rabbit mAb
Host Species	Rabbit
Clonality	Monoclonal
Isotype	Rabbit IgG
Purification	Affinity-chromatography
Applications	WB IP FC
Species Reactivity	Human Mouse
Specificity	STAT1 Antibody detects endogenous levels of total STAT1
Immunogen Description	A synthesized peptide derived from human STAT1
Other Names	Signal transducer and activator of transcription 1; Signal transducer and activator of transcription 1-alpha/beta; Transcription factor ISGF-3 components p91/p84; ISGF3; CANDF7; STAT 1; Stat1;
Accession No.	Uniprot:P42224
Uniprot	P42224
Calculated MW	84kDa
Formulation	Rabbit IgG in phosphate buffered saline , pH 7.4, 150mM NaCl, 0.02% sodium azide and 50% glycerol.
Storage	Store at +4°C short term. Store at -20°C long term. Avoid freeze / thaw cycle.

Application Details

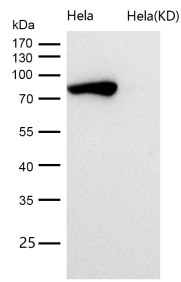
WB 1:1000~1:2000 IP 1:50 FC 1:50

Images



Western blot analysis of STAT1 expression in HeLa cell lysate.

All lanes use the Antibody at 1:1K dilution for 1 hour at room temperature.



Product Description

The protein encoded by this gene is a member of the STAT protein family. In response to cytokines and growth factors, STAT family members are phosphorylated by the receptor associated kinases, and then form homo- or heterodimers that translocate to the cell nucleus where they act as transcription activators.

Background

The protein encoded by this gene is a member of the STAT protein family. In response to cytokines and growth factors, STAT family members are phosphorylated by the receptor associated kinases, and then form homo- or heterodimers that translocate to the cell nucleus where they act as transcription activators.

Note: This product is for in vitro research use only