

PD1 Rabbit mAb

Catalog No: #58662

Package Size: #58662-1 50ul #58662-2 100ul

Orders: order@signalwayantibody.comSupport: tech@signalwayantibody.com

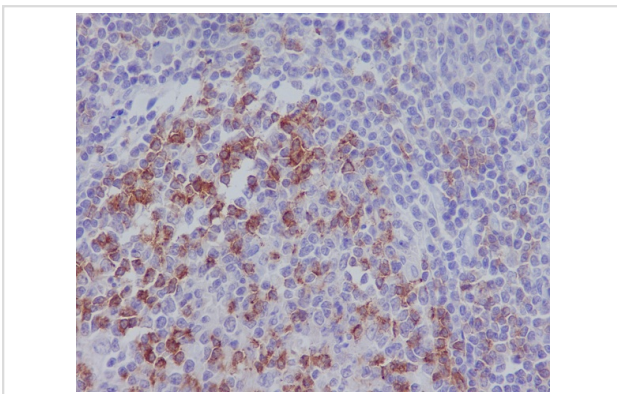
Description

| | |
|-----------------------|--|
| Product Name | PD1 Rabbit mAb |
| Host Species | Rabbit |
| Clonality | Monoclonal |
| Isotype | Rabbit IgG |
| Purification | Affinity-chromatography |
| Applications | IHC |
| Species Reactivity | Human |
| Specificity | PD1 Antibody detects endogenous levels of total PD1 |
| Immunogen Description | A synthesized peptide derived from human PD1 |
| Other Names | CD279; hPD 1; hSLE1; PD1; PDCD1; Programmed cell death 1; Protein PD 1; SLEB2; |
| Accession No. | Uniprot:Q15116 |
| Uniprot | Q15116 |
| Formulation | Rabbit IgG in phosphate buffered saline , pH 7.4, 150mM NaCl, 0.02% sodium azide and 50% glycerol. |
| Storage | Store at +4°C short term. Store at -20°C long term. Avoid freeze / thaw cycle. |

Application Details

IHC 1:50~1:200

Images



Immunohistochemical analysis of paraffin-embedded human tonsil, using PD1 Antibody .

Product Description

Inhibitory cell surface receptor involved in the regulation of T-cell function during immunity and tolerance. Upon ligand binding, inhibits T-cell effector functions in an antigen-specific manner. Possible cell death inducer, in association with other factors.

Background

Inhibitory cell surface receptor involved in the regulation of T-cell function during immunity and tolerance. Upon ligand binding, inhibits T-cell effector functions in an antigen-specific manner. Possible cell death inducer, in association with other factors.

Note: This product is for in vitro research use only