

Met (c-Met) Rabbit mAb

Catalog No: #58665

Package Size: #58665-1 50ul #58665-2 100ul

Orders: order@signalwayantibody.comSupport: tech@signalwayantibody.com

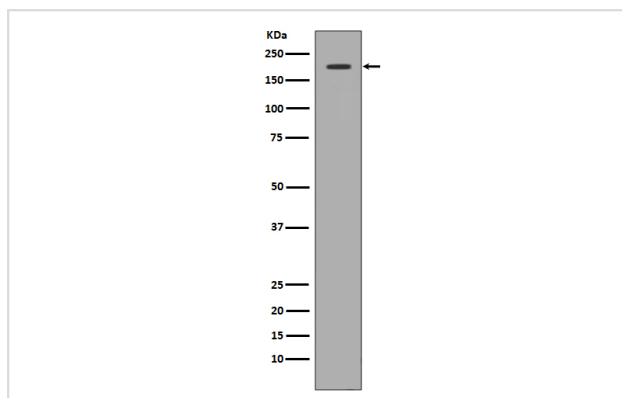
Description

Product Name	Met (c-Met) Rabbit mAb
Host Species	Rabbit
Clonality	Monoclonal
Isotype	Rabbit IgG
Purification	Affinity-chromatography
Applications	WB IHC ICC/IF FC
Species Reactivity	Human Mouse Rat
Specificity	Met (c-Met) Antibody detects endogenous levels of total Met (c-Met)
Immunogen Description	A synthesized peptide derived from human Met (c-Met)
Other Names	AUTS9; c met; cmet; D249; HGFR; MET; RCCP2; Par4; HGF receptor; HGF-SF receptor;
Accession No.	Uniprot:P08581
Uniprot	P08581
Formulation	Rabbit IgG in phosphate buffered saline , pH 7.4, 150mM NaCl, 0.02% sodium azide and 50% glycerol.
Storage	Store at +4°C short term. Store at -20°C long term. Avoid freeze / thaw cycle.

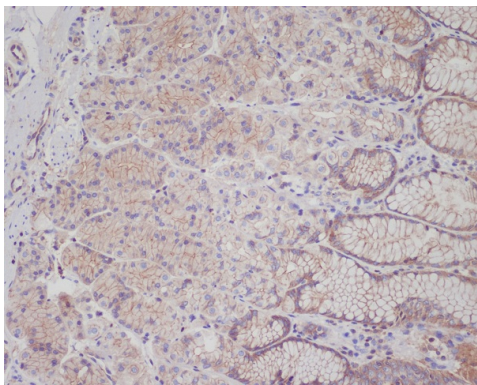
Application Details

WB 1:500~1:2000 IHC 1:50~1:200 ICC/IF 1:50~1:200 FC 1:50

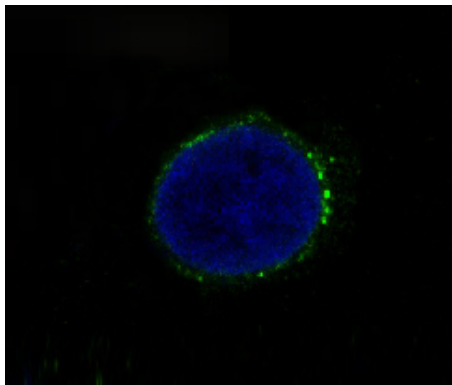
Images



Western blot analysis of c-Met expression in 293 cell lysate.



Immunohistochemical analysis of paraffin-embedded human stomach, using Met (c-Met) Antibody .



Immunofluorescent analysis of HT-29 cells, using Met (c-Met) Antibody .

Product Description

The proto-oncogene MET product is the hepatocyte growth factor receptor and encodes tyrosine-kinase activity. The primary single chain precursor protein is post-translationally cleaved to produce the alpha and beta subunits, which are disulfide linked to form the mature receptor.

Background

The proto-oncogene MET product is the hepatocyte growth factor receptor and encodes tyrosine-kinase activity. The primary single chain precursor protein is post-translationally cleaved to produce the alpha and beta subunits, which are disulfide linked to form the mature receptor.

Note: This product is for in vitro research use only