

## Calmodulin Rabbit mAb

Catalog No: #58666

Package Size: #58666-1 50ul #58666-2 100ul

Orders: order@signalwayantibody.com

Support: tech@signalwayantibody.com

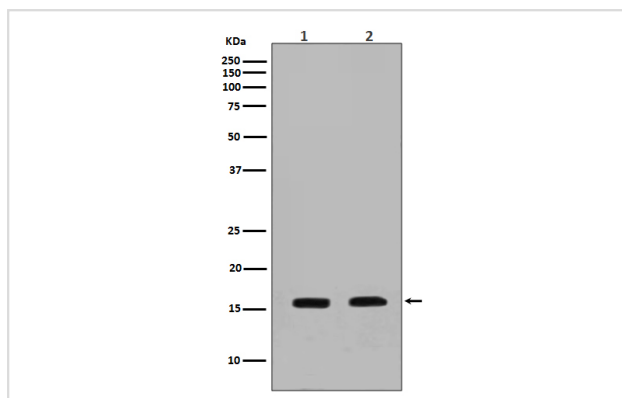
## Description

Product Name	Calmodulin Rabbit mAb
Host Species	Rabbit
Clonality	Monoclonal
Isotype	Rabbit IgG
Purification	Affinity-chromatography
Applications	WB IHC ICC/IF IP FC
Species Reactivity	Human Mouse Rat
Specificity	Calmodulin Antibody detects endogenous levels of total Calmodulin
Immunogen Description	A synthesized peptide derived from human Calmodulin
Other Names	CALM; CALM1; CALM2; CALM3; CAM; CAM1; CAM2; CAM3; CAMB; CAMC;
Accession No.	Uniprot:P62158
Uniprot	P62158
Formulation	Rabbit IgG in phosphate buffered saline , pH 7.4, 150mM NaCl, 0.02% sodium azide and 50% glycerol.
Storage	Store at +4°C short term. Store at -20°C long term. Avoid freeze / thaw cycle.

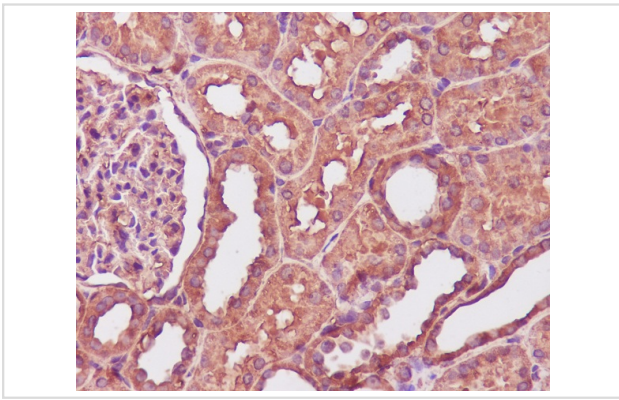
## Application Details

WB 1:500~1:2000 IHC 1:50~1:200 ICC/IF 1:50~1:200 IP 1:50 FC 1:50

## Images



Western blot analysis of Calmodulin expression in (1) NIH-3T3 cell lysate; (2) MCF-7 cell lysate.



Immunohistochemical analysis of paraffin-embedded human kidney, using Calmodulin Antibody .

## Product Description

Calmodulin is the archetype of the family of calcium-modulated proteins of which nearly 20 members have been found. They are identified by their occurrence in the cytosol or on membranes facing the cytosol and by a high affinity for calcium.

## Background

Calmodulin is the archetype of the family of calcium-modulated proteins of which nearly 20 members have been found. They are identified by their occurrence in the cytosol or on membranes facing the cytosol and by a high affinity for calcium.

Note: This product is for in vitro research use only