

LDL Receptor Rabbit mAb

Catalog No: #58667

Package Size: #58667-1 50ul #58667-2 100ul

Orders: order@signalwayantibody.com

Support: tech@signalwayantibody.com

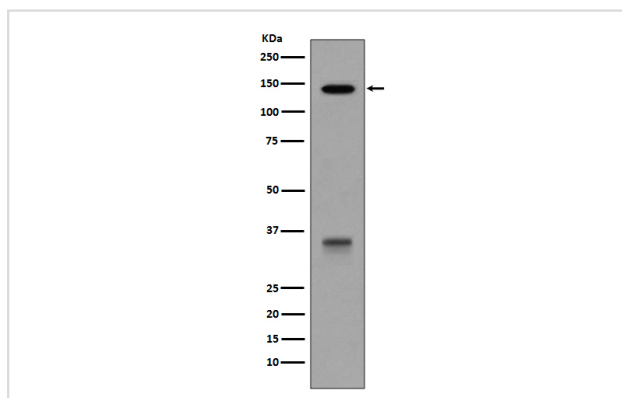
Description

Product Name	LDL Receptor Rabbit mAb
Host Species	Rabbit
Clonality	Monoclonal
Isotype	Rabbit IgG
Purification	Affinity-chromatography
Applications	WB IHC
Species Reactivity	Human Mouse
Specificity	LDL Receptor Antibody detects endogenous levels of total LDL Receptor
Immunogen Description	A synthesized peptide derived from human LDL Receptor
Other Names	FH ; FHC ; LDL receptor; LDLCQ2; LDLR ; Low Density Lipoprotein Receptor; Low density lipoprotein receptor class A domain containing protein 3;
Accession No.	Uniprot:P01130
Uniprot	P01130
Formulation	Rabbit IgG in phosphate buffered saline , pH 7.4, 150mM NaCl, 0.02% sodium azide and 50% glycerol.
Storage	Store at +4°C short term. Store at -20°C long term. Avoid freeze / thaw cycle.

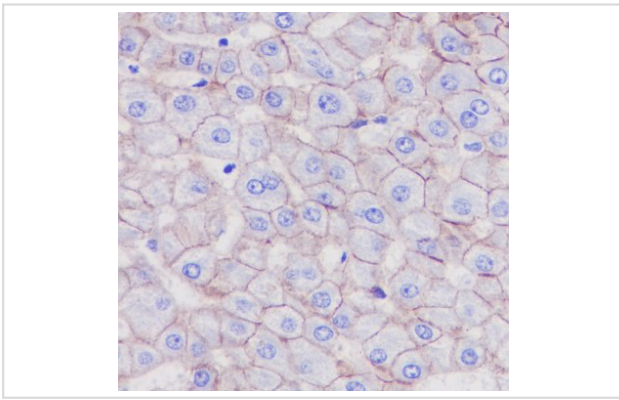
Application Details

WB 1:1000~1:2000 IHC 1:100~1:500

Images



Western blot analysis of LDLR expression in HepG2 cell lysate.



Immunohistochemical analysis of paraffin-embedded human liver carcinoma, using LDL Receptor Antibody .

Product Description

Binds LDL, the major cholesterol-carrying lipoprotein of plasma, and transports it into cells by endocytosis. In order to be internalized, the receptor-ligand complexes must first cluster into clathrin-coated pits. In case of HIV-1 infection, functions as a receptor for extracellular Tat in neurons, mediating its internalization in uninfected cells.

Background

Binds LDL, the major cholesterol-carrying lipoprotein of plasma, and transports it into cells by endocytosis. In order to be internalized, the receptor-ligand complexes must first cluster into clathrin-coated pits. In case of HIV-1 infection, functions as a receptor for extracellular Tat in neurons, mediating its internalization in uninfected cells.

Note: This product is for in vitro research use only