

MMP14 Rabbit mAb

Catalog No: #58668

Package Size: #58668-1 50ul #58668-2 100ul

Orders: order@signalwayantibody.com

Support: tech@signalwayantibody.com

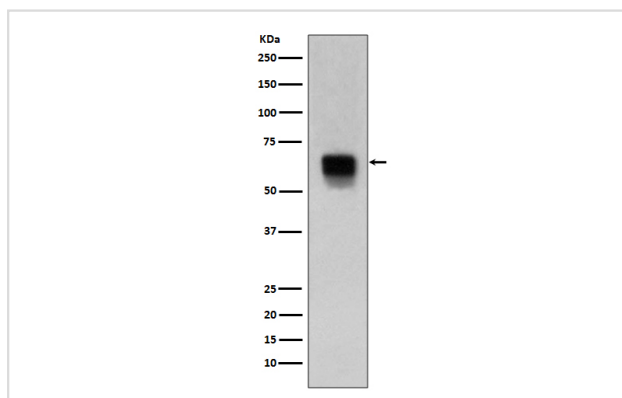
Description

Product Name	MMP14 Rabbit mAb
Host Species	Rabbit
Clonality	Monoclonal
Isotype	Rabbit IgG
Purification	Affinity-chromatography
Applications	WB IHC ICC/IF IP FC
Species Reactivity	Human Mouse Rat
Specificity	MMP14 Antibody detects endogenous levels of total MMP14
Immunogen Description	A synthesized peptide derived from human MMP14
Other Names	MMP-14; MMP-X1; MT-MMP; MT1MMP; MTMMP1; WNCHRS; MT1-MMP; MT-MMP 1;
Accession No.	Uniprot:P50281
Uniprot	P50281
Calculated MW	65kDa
Formulation	Rabbit IgG in phosphate buffered saline , pH 7.4, 150mM NaCl, 0.02% sodium azide and 50% glycerol.
Storage	Store at +4°C short term. Store at -20°C long term. Avoid freeze / thaw cycle.

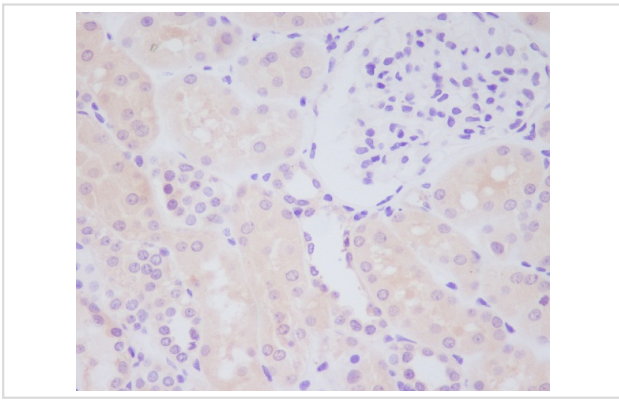
Application Details

WB 1:1000~1:2000 IHC 1:50~1:200 ICC/IF 1:50~1:200 IP 1:50 FC 1:50

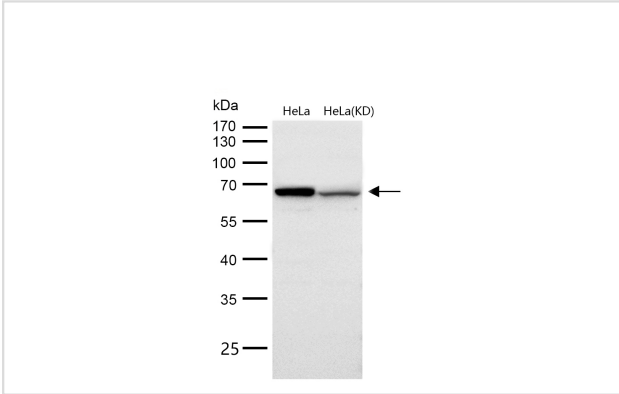
Images



Western blot analysis of MMP14 expression in human spleen lysate.



Immunohistochemical analysis of paraffin-embedded human kidney, using MMP14 Antibody .



All lanes use the Antibody at 1:1K dilution for 1 hour at room temperature.

Product Description

MMP14 Seems to specifically activate progelatinase A. May thus trigger invasion by tumor cells by activating progelatinase A on the tumor cell surface. Belongs to the peptidase M10A family.

Background

MMP14 Seems to specifically activate progelatinase A. May thus trigger invasion by tumor cells by activating progelatinase A on the tumor cell surface. Belongs to the peptidase M10A family.

Note: This product is for in vitro research use only